

Poole, Dorset, BH16

Quickmove
PROPERTIES



£275,000

 x 2

 x 2

This preowned, modern park home (45x20) is perfect for those looking for a detached, easy to maintain, bungalow style retirement property. The furnished home was built in 2018 and features an open plan kitchen/diner with modern range cooker and other appliances. It has a study, utility room, main bathroom, two double bedrooms with fitted wardrobes and master bedroom with en-suite shower room.

The developments' location is secluded and peaceful, surrounded by forest, a haven for nature and wildlife. A convenient bus stop is located directly outside and if you are feeling adventurous, why not hop on the Ferry to Sandbanks, close access to the Jurassic Coast and the main ferry terminal to Jersey.

Ages restriction: Over 45's

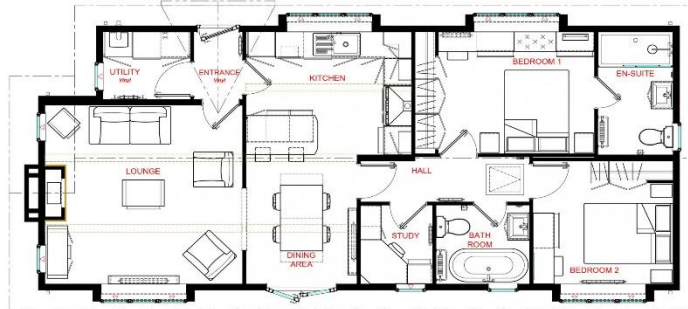
Pet friendly: Yes

Site fees:

Residential License

Key Features

- Bus stop nearby
- Driveway
- En suite
- Gas central heating
- Immediate occupancy available
- Luxury 2 bed park bungalow
- Over 45's
- Pet-friendly
- Residential park home
- Study



House to sell?

Hassle-free Property Part-Exchange is available from Quickmove Properties, with no estate agent fees, no solicitor's fees and no market uncertainty.

CONTACT US

01793 840917

advice@quickmoveproperties.co.uk

