

Canterbury, Kent, CT4



£225,000



A well-presented pre-owned, two double bedroom park home (46x20) situated on this sought-after residential park for the over 50's. This home has been thoughtfully updated by the current seller and boasts an en-suite shower room, double glazing, gas central heating, driveway, and gardens.

This rural development is in the Kent Downs, which is an Area of Outstanding Natural Beauty. The development is located 7 miles south of the city of Canterbury, where you can find an abundance of amenities. 10 miles away is the Blean Wood National Nature Reserve which features plenty of dog walking routes and picnic areas.

Age restriction: Over 50s

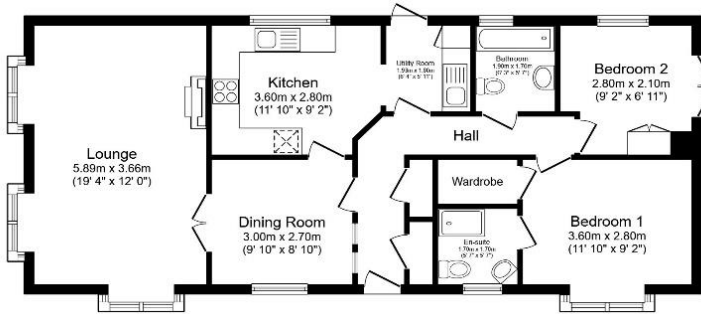
Pet friendly: Yes

Site fees: £206 per month

Residential license

Key Features

- Community living
- En suite
- Garden and driveway
- Modern kitchen with utility
- Over 50's
- Pet friendly
- Sought after residential park
- Tastefully refurbished
- Two double bedrooms
- Countryside location



House to sell?

Hassle-free Property Part-Exchange is available from Quickmove Properties, with no estate agent fees, no solicitor's fees and no market uncertainty.

CONTACT US

01793 840917

advice@quickmoveproperties.co.uk

