

# Lune View Park, Halton Village, Lancaster, Lancashire, LA2

**Quickmove**  
PROPERTIES



£150,000





Stately Albion Balmoral (40'x20') park home refurbished in 2016 with further bathroom upgrades in 2020, with parking for 2 cars. The kitchen comes with a full suite of appliances. This impressive home is situated in a village location overlooking the River Lune at Halton village, Lancaster. It enjoys breath-taking south-facing views of the river and Denny Beck Bridge from the wrap-around glass fronted deck.

Lune View Park is a small Licensed Residential Park made up of only 16 homes and enjoys the privacy and security of a Gated Community. The site is conveniently located behind the village pub and only 150yds from the village Social Club too. Halton village has a great infrastructure benefitting from plenty of amenities.

Age restriction: Over 45s

Pet friendly: Yes

Site fees (at time of listing): £121.00 per month

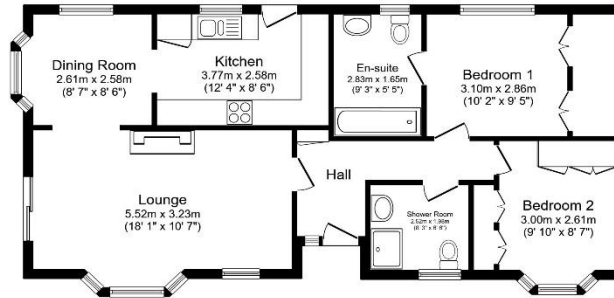
Residential license

### House to sell?

Contact Quickmove for a free, no-obligation Part-Exchange valuation on this home. Enjoy a hassle-free move, with no estate agents' fees or solicitors to pay. You even get to keep the keys to your existing property for 2 weeks after completion, so you can move out at your leisure.

### Key Features

- Over 45's
- Parking for 2 cars
- Part Exchange Available
- Private Decking
- Rural location
- Gated Development
- Recently Refurbished
- Residential Development
- River view
- Two Bedrooms



Total floor area 76.1 sq.m. (819 sq.ft.) approx.

This floor plan is for illustrative purposes only, it is not drawn to scale. Any measurements, floor areas (including any total floor area), openings and orientation are approximate. No details are guaranteed, they cannot be relied upon for any purpose and they do not form part of any agreement. No liability is taken for any error, omission or misstatement. A party must rely upon its own inspection(s). Powered by [www.totalsagent.com](http://www.totalsagent.com)



### CONTACT US

01793 840917

[advice@quickmoveproperties.co.uk](mailto:advice@quickmoveproperties.co.uk)

