

# Bromyard, Herefordshire, HR7



£399,995



This home is perfect for those looking for a detached, easy to maintain, bungalow style retirement property in a modern secluded development. This Omar Heritage (50'x20') park home features modern, comfortable furniture, two bedrooms and two bathrooms.

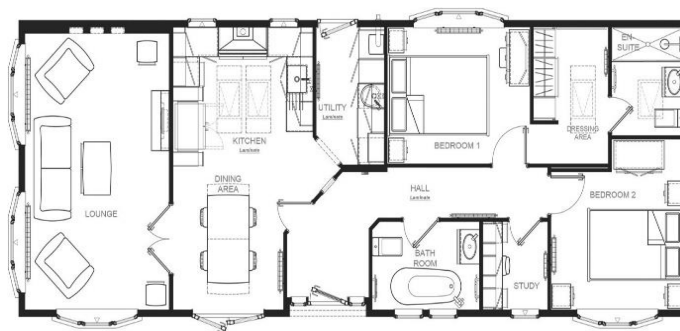
Positioned in a unique and historic location, this gated residential development sits within the walls of an old castle, with turrets and ancient walls still in place. Nestled in rural Herefordshire, park residents enjoy access to the park-owned country estate with beautiful countryside walks and views across the Bromyard Downs and Malvern Hills.

The Park boasts a lovely clubhouse, Laundry Facilities, Hair salon and most importantly a warm, friendly & active community of residents. Approximately a five-minute drive away is the highly attractive Sapey Golf & Country Club which offers a discount for park residents and hosts several events including quiz nights.

Age restriction: Over 45's  
 Pet friendly: Yes  
 Site fees: £242.12 per month

### Key Features

- Brand new home
- Community Living
- Part exchange for a quick sale
- Exceptionally High Specification
- Fully Furnished
- Over 45s
- Residential gated development
- On site facilities



**House to sell?**  
 Hassle-free Property Part-Exchange is available from Quickmove Properties, with no estate agent fees, no solicitor's fees and no market uncertainty.

### CONTACT US

01793 840917

[advice@quickmoveproperties.co.uk](mailto:advice@quickmoveproperties.co.uk)

