

Wimborne, Dorset, BH21



Price as listed



This modern pre-owned two bedroom (42'x20') Omar Accent park bungalow is located on a corner plot on this sought-after residential development by RoyaleLife. It has an en-suite shower room, open plan living/dining room, modern fitted kitchen, bathroom, double glazing, decked patio area and driveway to the side.

These homes are set within a private gated country estate. A short distance away is the Moors Valley Country Park which provides lots of outdoor pursuits with beautiful walks, cycle paths and a golf course. The nearby market town of Wimborne boasts one of the largest and most famous open and covered markets in the south of England.

Age restriction: Over 45s

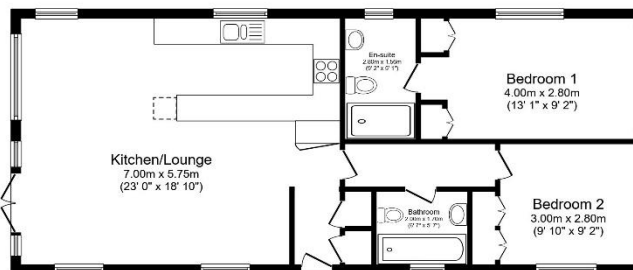
Pet friendly: Yes

Site fees (at time of listing): £260.74 per month

Residential license

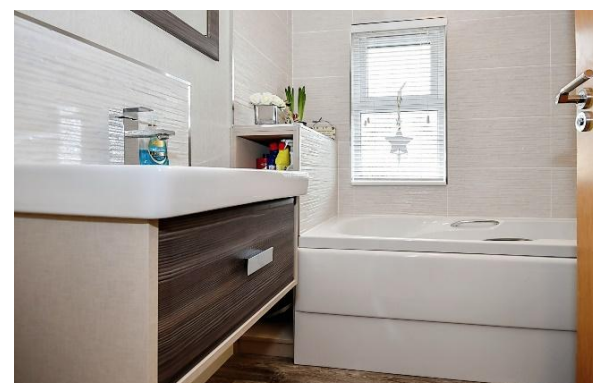
Key Features

- Built 2019
- Community Living
- Countryside location
- Fully Fitted Kitchen
- Over 45's
- Pet-friendly
- Pre-owned park home
- RoyaleLife development
- Gated Development



Total floor area 76.9 sq.m. (828 sq.ft.) approx

This floor plan is for illustrative purposes only. It is not drawn to scale. Any measurements, floor areas (including any total floor area), openings and orientation are approximate. No details are guaranteed, they cannot be relied upon for any purpose and they do not form part of any agreement. No liability is taken for any error, omission or misstatement. A party must rely upon its own inspection(s). Powered by www.foolagor.com



House to sell?

Hassle-free Property Part-Exchange is available from Quickmove Properties, with no estate agent fees, no solicitor's fees and no market uncertainty.

CONTACT US

01793 840917

advice@quickmoveproperties.co.uk

