

# Ilfracombe, Devon, EX34



£194,995



x 2



x 2

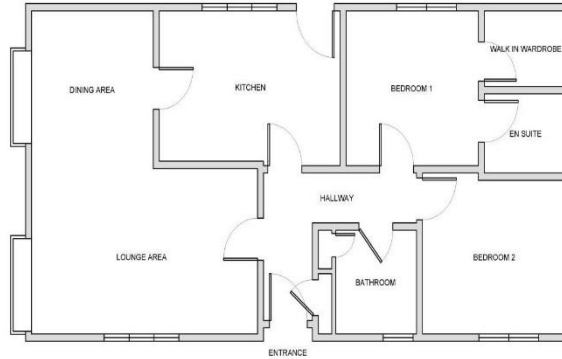
This brand new, fully furnished modern Elegance Amber luxury park home (36'x18') features a modern kitchen with integrated appliances, dining area and a comfortable living room. There are also two bedrooms and two bathrooms.

This established residential development is settled in the rolling hills of North Devon with wonderful countryside views, a much sought after location. The park is located on the edge of the award-winning village of Berrynarbor, on the North Devon coast. Situated 4 miles from the Victorian town of Ilfracombe, and 2 miles from the seaside village of Coombe Martin, one of the gateways to Exmoor National Park. Local amenities are nearby, a pub is less than a mile away and a supermarket is 15 minutes drive away. The Tunnels blue flag beach and the Larkstone Leisure Park are a short drive away.

Age restriction: Over 45's  
Pet friendly: Yes  
Site fees: £295.02 per month  
Residential license

### Key Features

- Fully Furnished
- Far reaching views
- Coastal location
- Established Park
- Residential development
- Countryside Walks
- Community Living
- Part Exchange Available
- Over 45's



### House to sell?

Hassle-free Property Part-Exchange is available from Quickmove Properties, with no estate agent fees, no solicitor's fees and no market uncertainty.

### CONTACT US

01793 840917

[advice@quickmoveproperties.co.uk](mailto:advice@quickmoveproperties.co.uk)

