

# Surrey Hills Park, Tadworth, Surrey, KT20

**Quickmove**  
PROPERTIES



£350,000

 x 2

 x 2

This is a superb pre-owned 50'x20' Prestige Sofia park home built in 2018. It has an impressive Kitchen/dining room with vaulted ceiling, spacious lounge, two double bedrooms, en-suite, bathroom, mains gas central heating, enclosed rear garden and off street parking.

Surrey Hill Parks is a short distance from the M25 but is surrounded by countryside, with the North and South Downs on your doorstep. The town of Dorking and Leatherhead are just 6 miles away and are easily accessible by car or public transport and offer an array of amenities, theatres, and entertainment. Epsom Downs Racecourse is 15 minute drive away and is a must-visit for racing fans. A bus stop is located just outside the park, making it easy to visit nearby towns and cities.

Age restriction: Over 25's

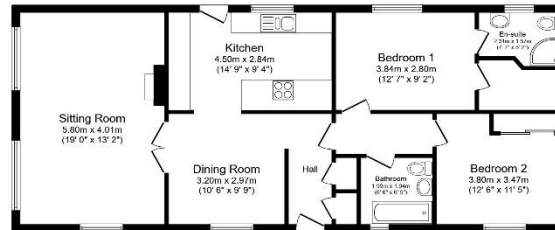
Pet friendly: Yes

Site fees: £244.60 per month

Residential park

## Key Features

- Driveway
- Enclosed Garden
- Exceptionally High Specification
- Over 25's
- Part Exchange Available
- Pet-friendly
- Pre-owned park home
- Sought After Residential Park
- Spacious Accommodation
- Two Double Bedrooms



Total floor area 92.1 sq.m. (991 sq.ft.) approx  
This floor plan is for illustrative purposes only. It is not drawn to scale. Any measurements, floor areas (including any total floor area), openings and orientations are approximate. No details are guaranteed, they cannot be relied upon for any purpose and they do not form part of any agreement. No liability is taken for any error, omission or misstatement. A party must rely upon its own inspection. Powered by www.idealagent.com



## House to sell?

Hassle-free Property Part-Exchange is available from Quickmove Properties, with no estate agent fees, no solicitor's fees and no market uncertainty.

## CONTACT US

01793 840917

advice@quickmoveproperties.co.uk

**Quickmove**  
 PROPERTIES

