

# Bearwood Park, Wokingham, Berkshire, RG41

**Quickmove**  
PROPERTIES



£165,000



This pre-owned, well maintained Stately Balmoral (36'x20') park home is perfect for those looking for a detached, easy-to-maintain, bungalow-style property. The home has two double bedrooms, kitchen and dining area, and a separate living room. The landscaped exterior boasts a separate garage and an easy-to-maintain garden space.

Bearwood Park is well located with amenities within walking distance. Two train stations are nearby, as are a handful of pubs, cafes and a Sainsbury's supermarket. Located in between Reading and Wokingham, the park is just a short drive from the larger town amenities.

Age restriction: Over 55s

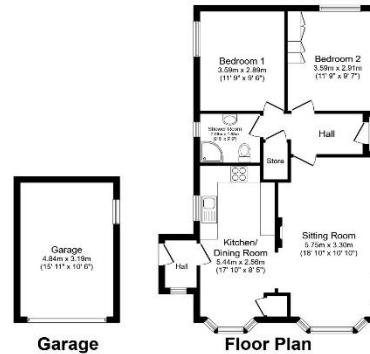
Pet friendly: Yes (Cats only)

Site fees (at time of listing): £172.70 per month

Residential license

## Key Features

- Community Living
- Established Park
- Garage
- Garden Shed
- Part Exchange
- Pre-owned park home
- Two Bedrooms
- Amenities nearby
- Residential area



Total floor area 83.7 sq.m. (901 sq.ft.) approx.

This floor plan is for illustrative purposes only, it is not drawn to scale. Any measurements, floor areas (including any total floor area), openings and orientation are approximate. No details are guaranteed, they cannot be relied upon for any purpose and they do not form part of any agreement. No liability is taken for any error, omission or misstatement. A party must rely upon its own inspection(s). Powered by [www.foxagent.com](http://www.foxagent.com)



## House to sell?

Hassle-free Property Part-Exchange is available from Quickmove Properties, with no estate agent fees, no solicitor's fees and no market uncertainty.

## CONTACT US

01793 840917

[advice@quickmoveproperties.co.uk](mailto:advice@quickmoveproperties.co.uk)

**Quickmove**  
PROPERTIES

