

Wisbech, Cambridgeshire, PE14



£195,000



This luxury, fully-furnished Omar Image (40'x20') park home is perfect for those looking for a detached, easy to maintain, bungalow style property. The home features an open plan kitchen and dining room with integrated appliances, a double door leads to a modern and comfortable lounge suite with an electric fire point.

This development is located a short distance from the market town of Wisbech, famous for its Georgian architecture and elegant buildings. In Wisbech, you can find high street shops and small boutiques as well as Wisbech Castle which was originally built in 1072 and is a local landmark. For golf lovers, Thorney Lakes Golf Club is nearby and provides a wonderful day out. Nearby is Norfolk and 5 miles north is Lincolnshire.

Age restriction: Over 50s

Pet friendly: Yes

Site fees: £175 per month

Residential license

Stock images have been used, the home on-site may vary.

Key Features

- Brand new home
- Community Living
- Fully Furnished
- Integrated Appliances
- Over 50's
- Part Exchange Available
- Pet-friendly
- Residential Development
- Rural Location

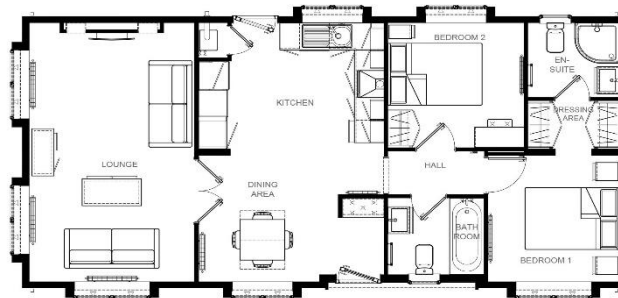
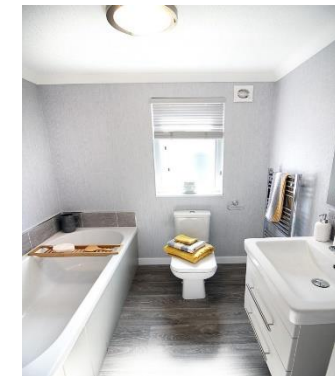


Image 40' x 20' 2DB



House to sell?
 Hassle-free Property Part-Exchange is available from Quickmove Properties, with no estate agent fees, no solicitor's fees and no market uncertainty.

CONTACT US

01793 840917

advice@quickmoveproperties.co.uk

