

# Richmondshire, Yorkshire, DL2



Price as listed



This brand new, modern-furnished Victory Beechwood (40'x20') luxury park home is perfect for those looking for a detached, easy to maintain, bungalow-style property. The property has a modern, open-plan kitchen, living and dining space, two bedrooms and two bathrooms.

The park is set in the Clevedon Hills on the edge of the North Yorkshire Moors National Park. The closest towns to the park are Richmond (11 miles) and Darlington (just 5 miles) with a regular bus route between the two from Dalton on Tees. Both towns have medical centres and supermarkets and town facilities.

Age restriction: None

Pet friendly: Yes

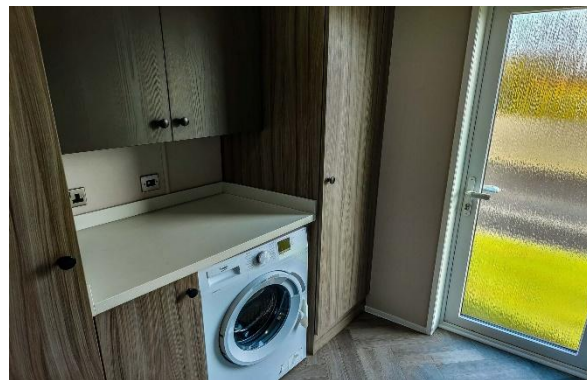
Site fees (at time of listing): £2,760 per year

12-month leisure license

Stock images have been used, the home on site may vary.

### Key Features

- 12 Month Leisure Licence
- Brand new home
- Fully furnished
- Modern Design
- Open plan home
- Parking
- Pet-friendly
- Small development
- Two bedrooms
- Village location



### House to sell?

Hassle-free Property Part-Exchange is available from Quickmove Properties, with no estate agent fees, no solicitor's fees and no market uncertainty.

### CONTACT US

01793 840917

[advice@quickmoveproperties.co.uk](mailto:advice@quickmoveproperties.co.uk)

