

Regency Court, Newton Abbot, Devon, TQ12



£220,000



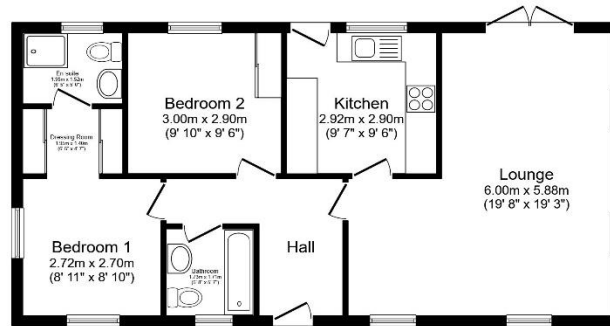
This pre-owned, modern Pathfinder Silkwood (42'x20') park bungalow is perfect for those looking for a detached, easy to maintain, bungalow style retirement property. The home features a modern, fitted kitchen/diner, living room, and two well sized double bedroom. The landscaped exterior boasts a garden area and parking spaces.

Set in picture-postcard surroundings, Regency Court has very spaced out and landscaped plots and is tailor-made for the over 45s. This RoyaleLife development is located in a good spot for enjoying the Devon countryside. Stover Country Park contains over 114 acres of woodland, heathland, a lake, and a variety of wildlife. It is a site of special scientific interest as it is protected by law to conserve its wildlife and geology. Dartmoor National Park has open moorlands and deep river valleys, with a rich history and rare wildlife.

Age restriction: Over 45's
 Pet friendly: Yes
 Site fees: £234.01 per month
 12-month leisure license

Key Features

- 12 Month Leisure Licence
- Community Living
- Countryside walks
- Driveway
- Garden
- Over 45s
- Pet-friendly
- Pre-owned park home
- Two bedrooms
- Well-maintained homes



Total floor area 66.9 sq.m. (720 sq.ft.) approx
 This floor plan is for illustrative purposes only. It is not drawn to scale. Any measurements, floor areas (including any total floor area), openings and orientation are approximate. No details are guaranteed, they cannot be relied upon for any purpose and they do not form part of any agreement. No liability is taken for any error, omission or misstatement. A party must rely upon its own inspection(s). Powered by www.bosspart.com



CONTACT US

01793 840917

advice@quickmoveproperties.co.uk

