

Nottingham, Nottingham, NG14



Price as listed



This brand new, modern-furnished Omar Westfield (40'x20') luxury park home features an open plan kitchen, living and dining room with large windows and French doors, two double bedrooms, an en suite and a bathroom.

This 12-month leisure development has a handful of homes on site and ready to occupy, with more coming soon. Located just two minutes walk from the River Trent, this gated development offers picturesque countryside living, with walking routes nearby. The development is located in Bleasby, a small and tranquil village with a lovely country pub. The local area also has great opportunities for boating and fishing. The nearest town is Southwell, a historic minster town with independent shops and restaurants. Newark on Trent is the next closest town, 8 miles away, with the nearest Medical Centre. Nottingham is 15 miles away with all city facilities and amenities.

Age restriction: None

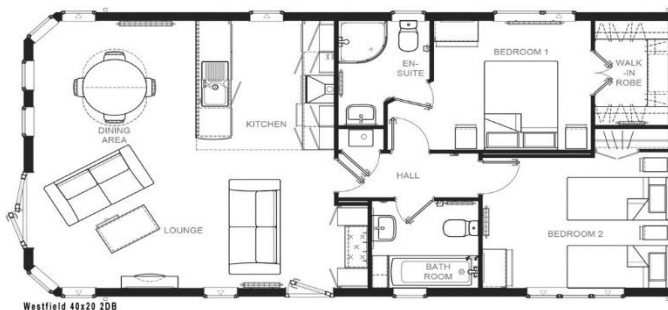
Pet friendly: Yes

Site fees: £4,500 per year for a twin unit

Stock images have been used, the home on site may vary

Key Features

- 12 Month Leisure Licence
- Brand new lodges
- Countryside Walks
- Fully Furnished
- Gated and secure community
- Home buying service
- Parking for two cars
- Pet-Friendly
- Two Double Bedrooms
- Village location



House to sell?

Hassle-free Property Part-Exchange is available from Quickmove Properties, with no estate agent fees, no solicitor's fees and no market uncertainty.

CONTACT US

01793 840917

advice@quickmoveproperties.co.uk

Quickmove
PROPERTIES



The Property
Ombudsman