

Nepgill Park, Bridgefoot, Cumbria, CA14

Quickmove
PROPERTIES



£90,000

 x 2

 x 2

A two double bedroom (40'x20') Stately Albion Windsor design located on this popular Residential park for the over 50's. The home has a Kitchen with utility room, an en-suite shower room to the master bedroom, driveway and garage as well as a generous plot. The home is end of chain and must be viewed!

Located on the edge of the Lake District, Nephgill Park enjoys peaceful rural surroundings and easy access to the nearby market town of Cockermouth. The park has community spaces that have been created with conservation in mind and have won numerous conservation awards for their honey-bee-friendly wildflower areas, hedgerows and woodlands. A short drive away is the Lakeland Fells and the scenic Solway Coast in West Cumbria.

Age restriction: Over 18's

Pets: No Cats or Dogs

Site fees (at time of listing): £192 per month

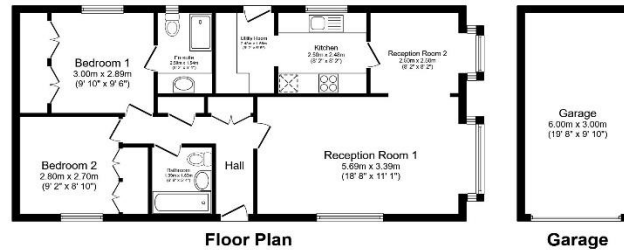
Residential license

House to sell?

Hassle-free Property Part-Exchange is available from Quickmove Properties, with no estate agent fees, no solicitor's fees and no market uncertainty.

Key Features

- Adults only
- Countryside Views
- Established Park
- Family owned development
- Garage and Driveway
- Garden space
- Part Exchange Available
- Pre-owned park home
- Residential Development
- Two Bedrooms



Total floor area 93.8 sq.m. (1,009 sq.ft.) approx

This floor plan is for illustrative purposes only. It is not drawn to scale. Any measurements, floor areas (including any total floor area), openings and orientation are approximate. No details are guaranteed. They cannot be relied upon for any purpose and they do not form part of any agreement. No liability is taken for any error, omission or misstatement. A party must rely upon its own inspection(s). Powered by www.thisagent.com



CONTACT US

01793 840917

advice@quickmoveproperties.co.uk

