

# Newholme Residential Park, Blackpool, Lancashire, FY3



£55,000



This beautifully-presented pre-owned park home is perfect for those looking for a detached, easy to maintain, bungalow-style property. The home features a comfortable living room, a kitchen and dining room, one double bedroom and a shower room. The exterior features a patio area and a parking space.

Newholme Park is ideally located for those who enjoy the sights of Blackpool. With public transport close by, it's just a short bus ride into Blackpool and a 10-minute drive into the centre. Residents are close to supermarkets and there are GP surgery and post office facilities close by. Lytham St Annes, a quaint village is nearby by. Residents can also easily reach communities such as Warton, Weeton, Normoss and Poulton-le-Fylde car or public transport.

Age restriction: Over 50s

Pet friendly: Yes

Site fees (at time of listing): £174 per month

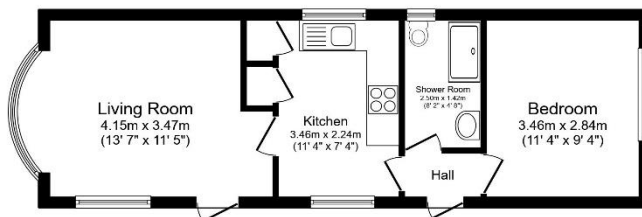
Residential license

### House to sell?

Hassle-free Property Part-Exchange is available from Quickmove Properties, with no estate agent fees, no solicitor's fees and no market uncertainty.

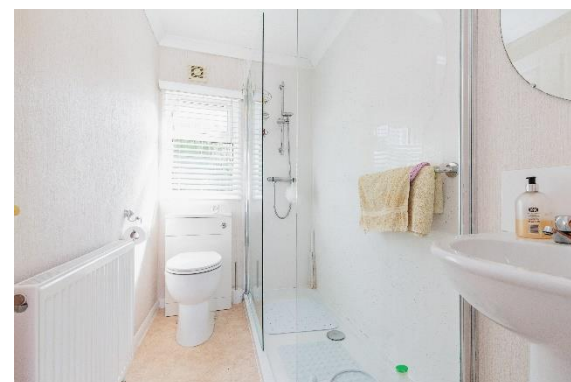
### Key Features

- Community Living
- Established Park
- Garden space
- One Double Bedroom
- Over 50s
- Parking space
- Part Exchange Available
- Pet-friendly
- Pre-owned park home
- Residential Development



Total floor area 39.0 sq.m. (420 sq.ft.) approx

This floor plan is for illustrative purposes only. It is not drawn to scale. Any measurements, floor areas (including any total floor area), openings and orientation are approximate. No details are guaranteed, they cannot be relied upon for any purpose and they do not form part of any agreement. No liability is taken for any error, omission or misstatement. A party must rely upon its own inspections. Powered by [www.localagent.com](http://www.localagent.com)



## CONTACT US

01793 840917

[advice@quickmoveproperties.co.uk](mailto:advice@quickmoveproperties.co.uk)

