

# Ipswich, Suffolk, IP6

**Quickmove**  
PROPERTIES



£169,995

 x 2

 x 2

This brand new, modern-furnished Omar Newmarket luxury park home (40'x14') is perfect for those looking for a detached, easy to maintain, bungalow style retirement property. This fully furnished traditional style home features two bedrooms and a kitchen with integrated appliances.

The park is well landscaped to provide a 'village' feel to the development. The park is very tranquil and peaceful, in a countryside location where you will find lots of local wildlife. Development work has taken place at the park to provide new plots and homes available. The park is situated on a hill and offers beautiful woodland views. The park is pet friendly, welcoming all responsible pet owners.

The park is located in a beautiful setting with picturesque views over open countryside and woodland in the Heart of Suffolk. The park is nestled in an ancient great wood overlooking the historic village of Great Blakenham. Amenities including a pub, doctors, local shop, and pharmacy can all be found within a few miles.

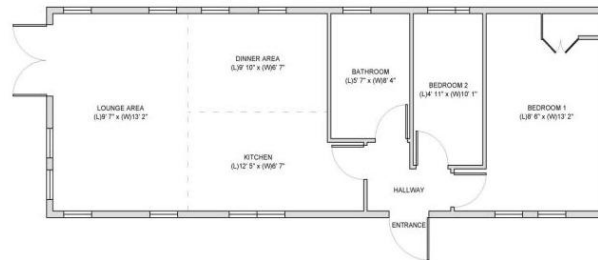
Age restriction: Over 45's

Pet friendly: Yes

Site fees: £235.52 per month

## Key Features

- Brand new home
- Community Living
- Countryside Views
- Exceptionally High Specification
- Fully Furnished
- Village Location
- Integrated Appliances
- Part Exchange Available
- Pet-Friendly
- Residential Development



### House to sell?

Hassle-free Property Part-Exchange is available from Quickmove Properties, with no estate agent fees, no solicitor's fees and no market uncertainty.

## CONTACT US

01793 840917

[advice@quickmoveproperties.co.uk](mailto:advice@quickmoveproperties.co.uk)

**Quickmove**  
PROPERTIES



The Property  
Ombudsman