

# Newport, Shropshire, TF10



£180,000





This pre-owned, well maintained Prestige Park Home (42'x20') is perfect for those looking for a detached, easy to maintain, bungalow-style property. The home features a modern kitchen, spacious lounge and two double bedrooms. The home also has a driveway and an easy to maintain garden.

Te is located on the outskirts of the market town of Newport, located North East of Telford. Newport is a lovely town with all the amenities you need on your doorstep, including pubs, shops, recreational activities and green areas. The Aqualate Mere National Nature Reserve is nearby, with walking trails and beautiful scenery, and for golf lovers, the Aqualate course is also nearby.

Age restriction: Over 50's

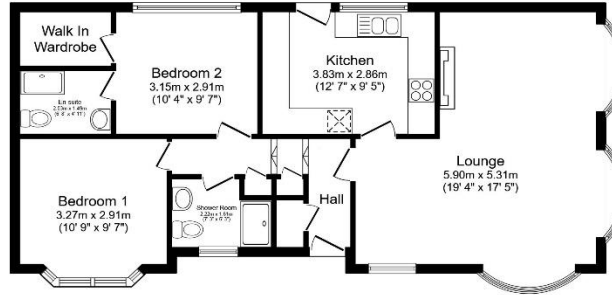
Site fees: £172 per month

Pet friendly: You can bring pets with you, but they cannot be replaced.

Residential license

### Key Features

- Driveway
- En suite
- Over 50s
- Part Exchange Available
- Pet-Friendly
- Pre-owned park home
- Residential Development
- Two Double Bedrooms
- Walk in wardrobe
- Well maintained home



Total floor area 77.0 m<sup>2</sup> (829 sq.ft.) approx

This floor plan is for illustrative purposes only. It is not drawn to scale. Any measurements, floor areas (including any total floor area), openings and orientation are approximate. No details are guaranteed, they cannot be relied upon for any purpose and they do not form part of any agreement. No liability is taken for any error, omission or misstatement. A party must rely upon its own inspection(s). Powered by [www.housagent.com](http://www.housagent.com)



### House to sell?

Hassle-free Property Part-Exchange is available from Quickmove Properties, with no estate agent fees, no solicitor's fees and no market uncertainty.

### CONTACT US

01793 840917

[advice@quickmoveproperties.co.uk](mailto:advice@quickmoveproperties.co.uk)

