

# Wimborne, Dorset, BH21



Price as listed



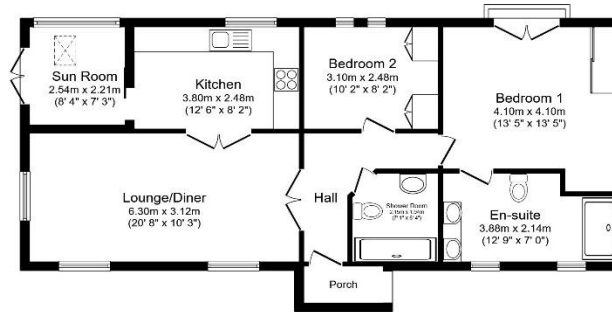
This home is a 45'x20' Omar Anniversary Park home, which is backing onto the Country Park and boasts spacious accommodation including two double bedrooms with the master having built in wardrobes and a large en-suite shower room, a modern, fitted kitchen, a sunroom to the rear, driveway and small garden.

Residents enjoy an outstanding rural location, surrounded by the Dorset countryside with the renowned Three legged Cross Pub and Restaurant close by. This rural setting offers easy access to Ringwood, Ferndown, Verwood and Bournemouth town centre. Nearby, the Moors Valley Country Park provides outdoor pursuits with walks, cycle paths and a golf course. 15 minutes' drive away you can find the New Forest National Park, a popular destination for holiday makers and walkers.

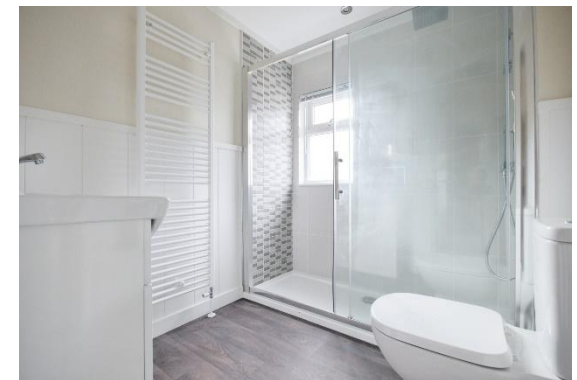
Age restriction: Over 45s  
 Site fees: £314.62 per month  
 Pet friendly: Yes

### Key Features

- Residential development
- Over 45s
- Gated development
- Pet friendly
- Sunroom
- Garden space
- Well maintained home
- Ready to view
- Two double bedrooms
- Part exchange available



Total floor area 78.8 sq.m. (849 sq.ft.) approx  
 This floor plan is for illustrative purposes only. It is not drawn to scale. Any measurements, floor areas (including any total floor area), coverings and orientation are approximate. No details are guaranteed. They cannot be relied upon for any purpose and they do not form part of any agreement. No liability is taken for any error, omission or misstatement. A party must rely upon its own inspection(s). Powered by [www.floorplan.com](http://www.floorplan.com)



**House to sell?**  
 Hassle-free Property Part-Exchange is available from Quickmove Properties, with no estate agent fees, no solicitor's fees and no market uncertainty.

**CONTACT US**  
 01793 840917  
[advice@quickmoveproperties.co.uk](mailto:advice@quickmoveproperties.co.uk)

