

Ashford, Kent, TN27

Quickmove
PROPERTIES



£185,000

 x 2

 x 2

This brand new, modern-furnished Pathfinder Tuscany (36'x20') luxury park home is perfect for those looking for a detached, easy to maintain, bungalow-style leisure property. The landscaped exterior boasts a large decking and parking. The home features a modern kitchen and living spaces. The kitchen has plenty of worktop space and integrated appliances.

This development is in the centre of the Garden of England and surrounded by beautiful countryside, picturesque villages, vineyards, and castles. Within easy reach of the park is a golf club, fishing lakes, and Leeds Castle. There is a bus stop down the road, and 1 mile away Biddenden Village with its restaurants, pubs, café, hairdressers, and local shops.

Age restriction: Over 45s

Pet Friendly: Yes (2 per home)

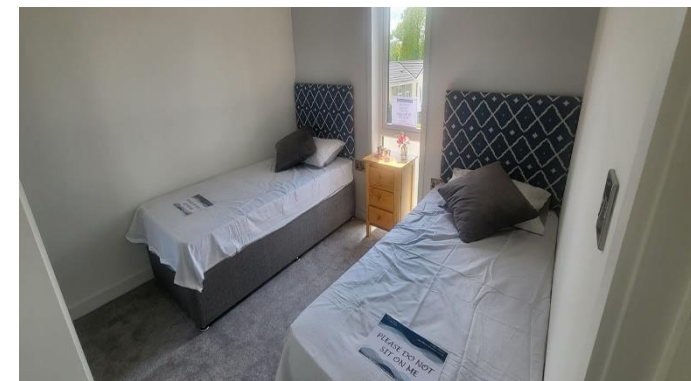
Site fees (at time of listing): £350 per month
12-month leisure license

House to sell?

Hassle-free Property Part-Exchange is available from Quickmove Properties, with no estate agent fees, no solicitor's fees and no market uncertainty.

Key Features

- 12 Month Leisure Licence
- Brand new home
- Bus Stop Nearby
- CCTV Security System
- Community Living
- Countryside location
- Over 45s
- Village amenities nearby



CONTACT US

01793 840917

advice@quickmoveproperties.co.uk

Quickmove
PROPERTIES

