

Canvey Island, Essex, SS8



Price as listed



This pre-owned, Prestige Cranbourne (50'x20') luxury park bungalow is perfect for those looking for a detached, easy to maintain, bungalow-style property. The well-maintained home features a spacious kitchen and dining area, and a separate living room with large windows. There are also two double bedrooms, an en suite to the master bedroom, a further family bathroom. The landscaped exterior features private parking and a wrap-around decking area.

This park is a popular gated community located on a 90-acre coastal development, right by the sea. This exciting modern development boasts leisure facilities including an outdoor swimming pool, lounge and bar, terrace, convenience store and a lively programme of entertainment events and community activities.

Site fees: £283.17 per month

Age restriction: Over 50s

Pet friendly: Yes

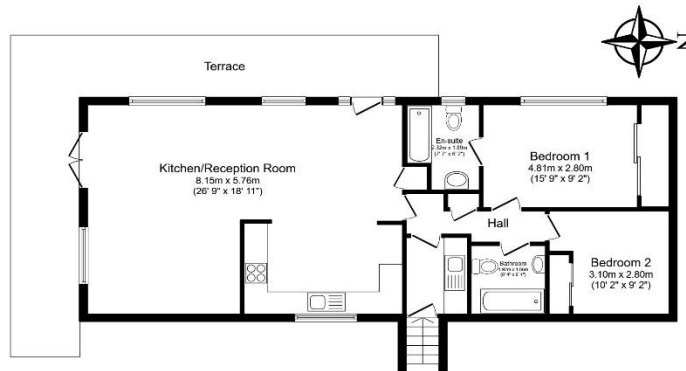
Residential license

House to sell?

Hassle-free Property Part-Exchange is available from Quickmove Properties, with no estate agent fees, no solicitor's fees and no market uncertainty.

Key Features

- Coastal Location
- Decking
- Modern design
- Outdoor Pool
- Over 50s
- Part Exchange Available
- Pet-Friendly
- Pre-owned park home
- Private, Gated Development



Total floor area 86.9 m² (936 sq.ft.) approx

This floor plan is for illustrative purposes only. It is not drawn to scale. Any measurements, floor areas (including any total floor area), openings and orientation are approximate. No details are guaranteed, they cannot be relied upon for any purpose and they do not form part of any agreement. No liability is taken for any error, omission or misstatement. A party must rely upon its own inspection(s). Powered by www.localagent.com



CONTACT US

01793 840917

advice@quickmoveproperties.co.uk

