

Berwick-Upon-Tweed, Northumberland, TD15



Price as listed



This brand new, modern-furnished ABI Westwood (44'x14') residential park home is perfect for those looking for a detached, easy-to-maintain, bungalow-style retirement property. The home features comfortable, open plan living and a kitchen area with large windows, modern furniture, and two bedrooms.

The development is well located in 44 acres of stunning countryside on the outskirts of Berwick-upon-Tweed on the Scottish border. Local amenities include a Tesco superstore a 3 minutes' drive away and the town of Berwick-upon-Tweed is a 5-minute drive away. Spittal Beach is a dog-friendly beach and only a few miles away.

Age restriction: Over 45s

Pet friendly: Yes

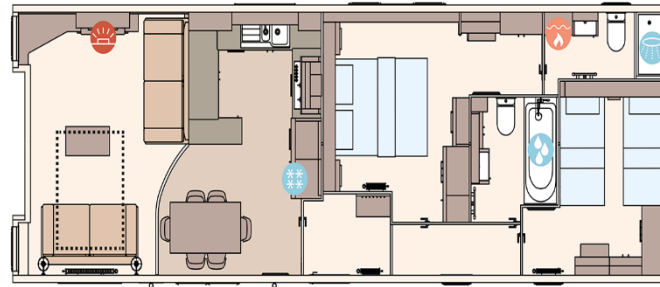
Site fees (at time of listing): £240 per month

Residential license

Stock images have been used, the home on site may vary

Key Features

- Brand new home
- Countryside location
- Exceptionally High Specification
- Fully Furnished
- On-site Bar and Restaurant
- Over 45s
- Part Exchange Available
- Pet-Friendly
- Residential Park Home



House to sell?

Hassle-free Property Part-Exchange is available from Quickmove Properties, with no estate agent fees, no solicitor's fees and no market uncertainty.

CONTACT US

01793 840917

advice@quickmoveproperties.co.uk

Quickmove
PROPERTIES

