

Bury St. Edmunds, Suffolk, IP28



£114,995



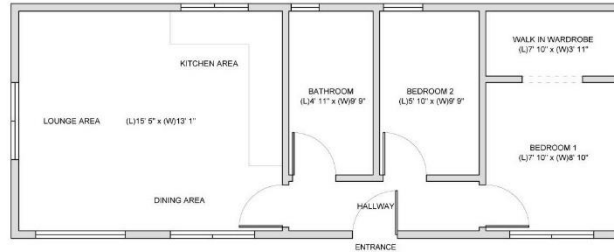
This brand new, fully furnished Jans Modular (36'x14') luxury park home is perfect for those looking for a detached, easy to maintain, bungalow-style retirement property. The home itself boasts double glazing, gas central heating as well as a modern, fitted kitchen with appliances as well as two spacious bedrooms and a bathroom.

A bus stop can be found a short walk from the park and nearby amenities, including a local shop, Sainsbury's, a pub and doctor's surgery, are within a few miles. Only a 30-minute drive away and you'll find both the market towns of Bury St Edmunds and Thetford. Bury St Edmunds, known as the cultural and retail centre for West Suffolk is also famed for its brewing and malting activities, whilst at Thetford you can explore the quaint town marked by history, with a strong connection to nature.

Age restriction: Over 50s
 Pet friendly: Yes (2 per home)
 Site fees: £243.46 per month
 Residential license

Key Features

- Brand new home
- Community Living
- Exceptionally High Specification
- Fully Furnished
- Integrated Appliances
- Modern design
- Over 50s
- Part Exchange Available
- Pet-Friendly
- Residential Development



House to sell?

Hassle-free Property Part-Exchange is available from Quickmove Properties, with no estate agent fees, no solicitor's fees and no market uncertainty.

CONTACT US

01793 840917

advice@quickmoveproperties.co.uk

