

Chippenham, Wiltshire, SN14



£235,000



This pre-owned, modern luxury park home is perfect for those looking for a detached, easy-to-maintain, bungalow-style property. The home has a modern kitchen with an island and a separate utility room. The living room has an electric fireplace and large windows. There are two double bedrooms, an en suite and a bathroom.

The Chase Park is an exclusive development of only 10 homes and is backing onto woodland. Located just off the M4 between Chippenham and Malmesbury, this development is within easy reach of many small towns and villages, including the famous Castle Combe. Less than half an hour from the park is Swindon and Bristol, where you can find high-street shopping, a range of popular restaurants and entertainment venues.

Age restriction: Over 50s

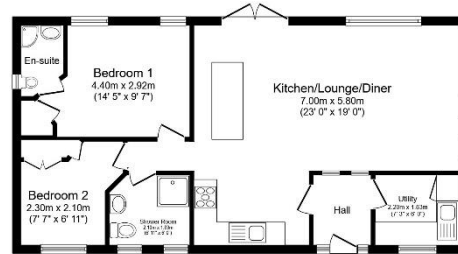
Pet friendly: Yes

Site fees: £170 per month, including water

Residential license

Key Features

- Countryside location
- Exceptionally High Specification
- Modern design
- Over 50s
- Part Exchange Available
- Pet-Friendly
- Pre-owned park home
- Residential Development
- Small exclusive development
- Two Bedrooms



Total floor area 65.3 m² (703 sq. ft.) approx
This floor plan is for illustrative purposes only. It is not drawn to scale. Any measurements, floor areas (including any total floor area), openings and orientation are approximate. No details are guaranteed, they cannot be relied upon for any purpose and they do not form part of any agreement. No liability is taken for any error, omission or misstatement. A party must rely upon its own inspection(s). Powered by www.insightgen.com



House to sell?

Hassle-free Property Part-Exchange is available from Quickmove Properties, with no estate agent fees, no solicitor's fees and no market uncertainty.

CONTACT US

01793 840917

advice@quickmoveproperties.co.uk

