

Elm Tree Park, Bristol, Somerset, BS20

Quickmove
PROPERTIES



£225,000



This immaculately presented Omar Newmarket (40'x20') park home is located on a sought-after development in Portbury. The home has a semi open plan layout, two double bedrooms, en suite bathroom a private enclosed garden area and a driveway.

Elm Tree Park consists of 48 homes set in beautiful surroundings with established gardens, roads, paths, and a local bridleway. The development is in the hamlet of Sheepway in North Somerset but has easy access to the local towns by the local bus services. The M5 and A369 are close to the park to explore the surrounding area and provide easy access to cross over into South Wales. The coastal resort of Weston-Super-Mare is only 30 minutes drive away.

Age restriction: Over 50s

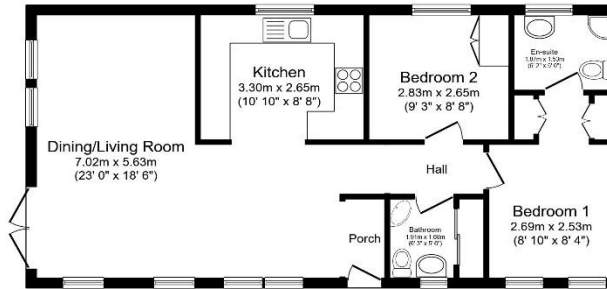
Pet friendly: No

Site fees (at time of listing): £253.84 per month

Residential license

Key Features

- Driveway
- Established Park
- Garden space
- Over 50s
- Part Exchange Available
- Pre-owned park home
- Residential Development
- Shops and amenities nearby
- Two Double Bedrooms



Total floor area 65.2 sq.m. (701 sq.ft.) approx

This floor plan is for illustrative purposes only. It is not drawn to scale. Any measurements, floor areas (including any total floor area), openings, and orientation are approximate. No details are guaranteed. Liability is taken for any error, omission or misstatement. A party must rely upon its own inspection(s). Powered by www.houseagent.com



House to sell?

Hassle-free Property Part-Exchange is available from Quickmove Properties, with no estate agent fees, no solicitor's fees and no market uncertainty.

CONTACT US

01793 840917

advice@quickmoveproperties.co.uk

Quickmove
PROPERTIES

