

Romford, Essex, RM3



£149,995



This pre-owned Omar Domek (28'x20') park home is perfect for those looking for a detached, easy to maintain, bungalow-style property. The home has a fitted kitchen, living room, two bedrooms and a bathroom.

Located in Romford, this is a mature residential park comprising of over 132 homes set out in a variety of locations, giving the overall feel of a small village. The park has good connections with Harold Hill and Brentwood and is just a 5-minute drive from the M25. Hilldene Shopping Centre is just a mile away and it is approximately a 20-minute drive to Lakeside in Thurrock with its excellent shopping, restaurants, and entertainment facilities.

Age restriction: Over 50s

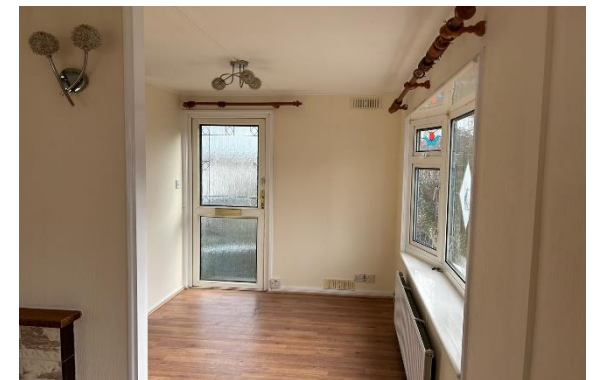
Pet friendly: Yes

Site fees (at time of listing): £245.80 per month

Residential license

Key Features

- Community Living
- Double glazing
- Established Park
- Over 50s
- Part Exchange Available
- Pet-Friendly
- Pre-owned park home
- Residential Development
- Shops and amenities nearby



House to sell?

Hassle-free Property Part-Exchange is available from Quickmove Properties, with no estate agent fees, no solicitor's fees and no market uncertainty.

CONTACT US

01793 840917

advice@quickmoveproperties.co.uk

Quickmove
PROPERTIES

