

# Henley-On-Thames, Oxfordshire, RG9

**Quickmove**  
PROPERTIES



£195,000

 x 2

 x 1



This is a well-presented two-bedroom park home located on this sought after residential park in Henley-on-Thames. There is a lounge and dining room, an enclosed rear garden and one parking space located to the side of the home.

The park is located in the lively town of Henley-on-Thames, Oxfordshire, famous for its annual Royal Regatta. The park is delightfully landscaped, and meticulously maintained. The immediate surrounding area includes the Oxfordshire Cotswolds and the beautiful Chiltern Hills. The park is also within walking distance from the town of Henley-on-Thames, where you can find all the local amenities.

Age restriction: Over 50s

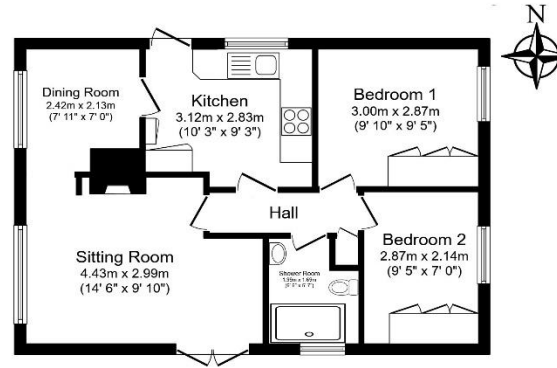
Pet friendly: Yes

Site fees (at time of listing): £221.43 per month

Residential license

## Key Features

- Community Living
- Garden space
- Outstanding Location
- Over 50s
- Part Exchange Available
- Pet-Friendly
- Pre-owned park home
- Residential Development
- Two Bedrooms
- Well maintained home



Total floor area 49.0 m<sup>2</sup> (527 sq.ft.) approx.  
This floor plan is for illustrative purposes only, it is not drawn to scale. Any measurements, floor areas (including any total floor area), openings and orientation are approximate. No details are guaranteed, they cannot be relied upon for any purpose and they do not form part of any agreement. No liability is taken for any error, omission or misstatement. A party must rely upon its own inspection(s). Powered by [www.brooksgate.com](http://www.brooksgate.com)



## House to sell?

Hassle-free Property Part-Exchange is available from Quickmove Properties, with no estate agent fees, no solicitor's fees and no market uncertainty.

## CONTACT US

01793 840917

[advice@quickmoveproperties.co.uk](mailto:advice@quickmoveproperties.co.uk)

**Quickmove**  
PROPERTIES

