

Newton Abbot, Devon, TQ12



£210,000



This pre-owned, modern-furnished luxury Stately Albion (40'x20') park home is perfect for those looking for a detached, easy to maintain, bungalow style property. The home features a modern, fitted kitchen and dining room, utility room, living room with an electric fireplace and two well-sized double bedroom. The exterior features an easy to maintain, private garden, and a driveway.

Set in picture-postcard surroundings, this park has very spaced out and landscaped homes and is tailor-made for the over 45s. This development is located in a good spot for enjoying the Devon countryside. Stover Country Park contains over 114 acres of woodland, heathland, a lake, and a variety of wildlife. It is a site of special scientific interest as it is protected by law to conserve its wildlife and geology.

Age restriction: Over 45's

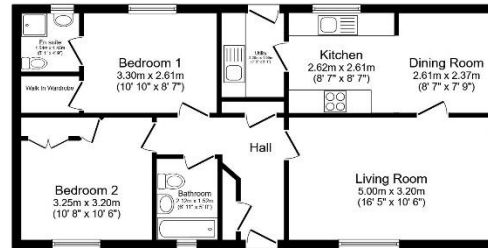
Pet friendly: Yes

Site fees: £212.44 per month

12-month leisure license

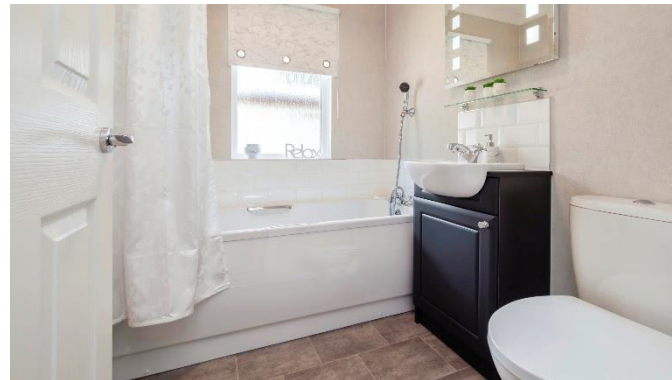
Key Features

- 12 Month Leisure Licence
- Community Living
- Garden space
- Modern design
- Over 45s
- Pet-Friendly
- Pre-owned park home
- Private, Gated Development
- Two Double Bedrooms



Total floor area 69.1 m² (744 sq.ft.) approx

This floor plan is for illustrative purposes only. It is not drawn to scale. Any measurements, floor areas (including any total floor area), openings and orientation are approximate. No details are guaranteed, they cannot be relied upon for any purposes and they do not form part of any agreement. No liability is taken for any error, omission or misstatement. A party must rely upon its own inspection(s). Powered by www.b2iasagent.com



House to sell?

Hassle-free Property Part-Exchange is available from Quickmove Properties, with no estate agent fees, no solicitor's fees and no market uncertainty.

CONTACT US

01793 840917

advice@quickmoveproperties.co.uk

Quickmove
PROPERTIES

