

# Bromyard, Herefordshire, HR7



Price as listed





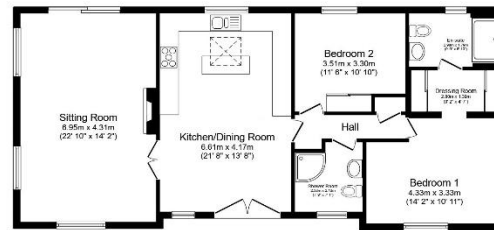
This pre-owned Tingdene Addington (50'x22') park home is perfect for those looking for a detached, easy to maintain, bungalow style property in a modern secluded development. This well-maintained home has a modern kitchen with an island and skylight, a dining area and a comfortable living room with an electric fireplace. There are two double bedrooms, the master has an en suite and a dressing area, and there is a further family bathroom with a walk in shower. The exterior features a driveway for 3 cars and, private garden space with views of the development.

This residential park is built in the grounds of a historic castle with a dog walking field that residents can enjoy. Located in a peaceful and breathtaking woodland setting, this stunning gated development has south-facing views over the Bromyard Downs and Malvern Hills. The area is renowned for its scenic beauty and many ancient towns and cities, including Hereford, Worcester, Gloucester, and Leominster, all accessible by the local bus services in Bromyard.

Age restriction: Over 45s  
 Pet friendly: Yes  
 Site fees: £269.80 per month  
 Residential license

### Key Features

- Driveway
- Established Park
- Garden space
- Over 45s
- Part Exchange Available
- Pet-Friendly
- Pre-owned park home
- Residential Park
- Two Double Bedrooms
- Well maintained home



Total floor area 104.1 m<sup>2</sup> (1,120 sq.ft.) approx

This floor plan is for illustrative purposes only. It is not drawn to scale. Any measurements, floor areas (including any total floor area), openings and orientation are approximate. No details are guaranteed, they cannot be relied upon for any purpose and they do not form part of any agreement. No liability is taken for any error, omission or misstatement. A party must rely upon its own inspection(s). Powered by [www.b2iasagent.com](http://www.b2iasagent.com)



### CONTACT US

01793 840917

[advice@quickmoveproperties.co.uk](mailto:advice@quickmoveproperties.co.uk)

