

# Salterforth, Lancashire, BB18

**Quickmove**  
PROPERTIES



£235,000

 x 2

 x 2

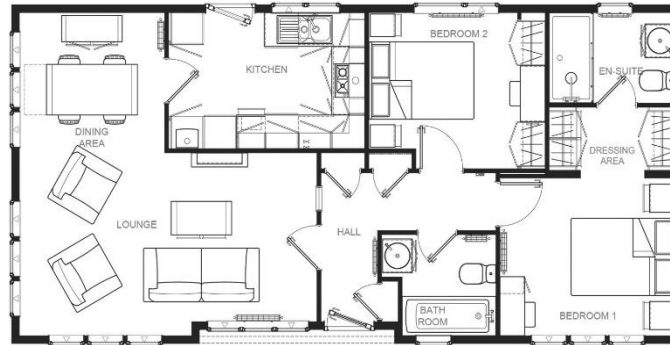
This brand-new, modern-furnished Omar Colorado (40'x20') luxury park home is perfect for those looking for a detached, easy-to-maintain, bungalow-style property. The home has a spacious kitchen and dining room, and a comfortable living room with an electric fireplace. There are two double bedrooms, an en suite to the master, and a further bathroom.

Located between Yorkshire and Lancashire, residents of this park have access to some of the country's more beautiful countryside. 1 mile down the road is Barnoldswick, a small market town where you can find your everyday amenities. Larger cities like Blackburn, Preston and Leeds are a short drive from the park. The park is also between the Forest of Bowland National Landscape and the Nidderdale National Landscape, offering beautiful scenery and walking routes.

Age restriction: Over 45s  
 Pet friendly: Yes  
 Site fees: £2,771.88 per year  
 Residential license  
 Stock images have been used.

### Key Features

- Brand new home
- Exceptionally High Specification
- Modern design
- Over 45s
- Parking space
- Part Exchange Available
- Pet-Friendly
- Two bedrooms
- Community living
- Pet friendly



**House to sell?**  
 Hassle-free Property Part-Exchange is available from Quickmove Properties, with no estate agent fees, no solicitor's fees and no market uncertainty.

### CONTACT US

01793 840917

[advice@quickmoveproperties.co.uk](mailto:advice@quickmoveproperties.co.uk)

