

Ipswich, Suffolk, IP5

Quickmove
PROPERTIES



£249,000



This brand new, modern-furnished Omar Image (40'x20') park home is perfect for those looking for a detached, easy to maintain, bungalow-style retirement property. The home has a spacious kitchen, living and dining room, two double bedrooms, an en suite and a bathroom.

This residential development is located in a picturesque heathland setting, situated on the outskirts of the village of Martlesham Heath, just to the east of Ipswich. It is exclusive for the over 45s and is pet friendly.

Martlesham Heath is ideally positioned for easy access into the town of Ipswich, which boasts excellent shopping and entertainment facilities, along with historic sites, buildings and 12 medieval churches. A superstore and retail park are within easy walking distance of the park and there are rail and bus links from Ipswich for easy get away to further afield.

Age restriction: Over 45's

Pet friendly: Yes

Site fees: £196.88 per month

Stock images have been used, the home on site may vary

Key Features

- Brand new home
- Established Park
- Exceptionally High Specification
- Modern design
- Over 45s
- Part Exchange Available
- Pet-Friendly
- Plots Available
- Residential Development
- Village location

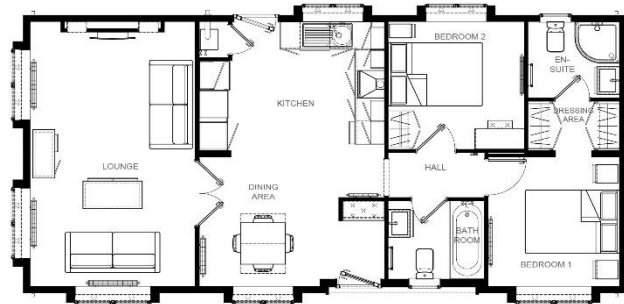
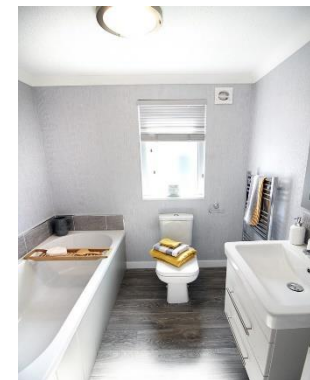


Image 40' x 20' 2DB



House to sell?

Hassle-free Property Part-Exchange is available from Quickmove Properties, with no estate agent fees, no solicitor's fees and no market uncertainty.

CONTACT US

01793 840917

advice@quickmoveproperties.co.uk

