

# Box Hill, Surrey, KT20



£325,000



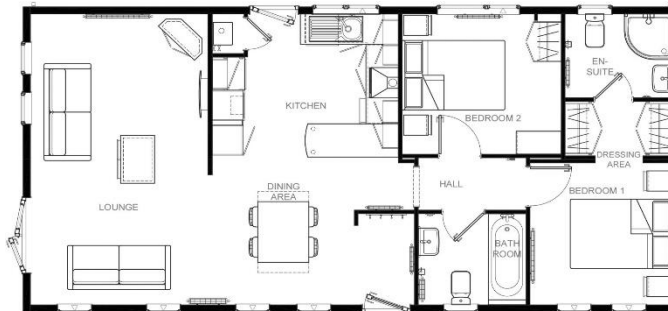
This brand new, modern-furnished Omar Newmarket (40'x20') is perfect for those looking for a detached, easy to maintain, bungalow-style retirement property. The home features a spacious kitchen, a comfortable living and dining area, two double bedrooms, an en suite and a family bathroom.

This park is a short distance from the M25 but is surrounded by countryside, with the North and South Downs on your doorstep. The town of Dorking and Leatherhead are just 6 miles away and are easily accessible by car or public transport and offer an array of amenities, theatres, and entertainment. Epsom Downs Racecourse is 15 minute drive away and is a must-visit for racing fans. A bus stop is located just outside the park, making it easy to visit nearby towns and cities.

Age restriction: Over 25's  
 Pet friendly: Yes  
 Site fees: £300 per month

### Key Features

- Brand new home
- Bus Stop Nearby
- Community Living
- En suite
- Exceptionally High Specification
- Fully Furnished
- Over 25s
- Part Exchange Available
- Pets welcome
- Residential Development



**House to sell?**  
 Hassle-free Property Part-Exchange is available from Quickmove Properties, with no estate agent fees, no solicitor's fees and no market uncertainty.

### CONTACT US

01793 840917

[advice@quickmoveproperties.co.uk](mailto:advice@quickmoveproperties.co.uk)

