

Nottingham, Nottinghamshire, NG12



£250,000



This brand-new, modern-furnished Omar Regency (36'x20') luxury park home is perfect for those looking for a detached, easy-to-maintain, bungalow-style property. The home has a spacious kitchen, dining area, comfortable living room, two double bedrooms, an en suite and a bathroom.

The development is located on the very edge of Nottingham, next door is the Nottingham Golf and Country Club, and the Holme Pierrepont Country Park. Nottingham is a bustling city known for its role in the Robin Hood legend and its historic buildings. Tollerton Village is within walking distance and has great amenities, it is also home to the 15th Century Hall.

Age restriction: Over 45s

Pet friendly: Yes

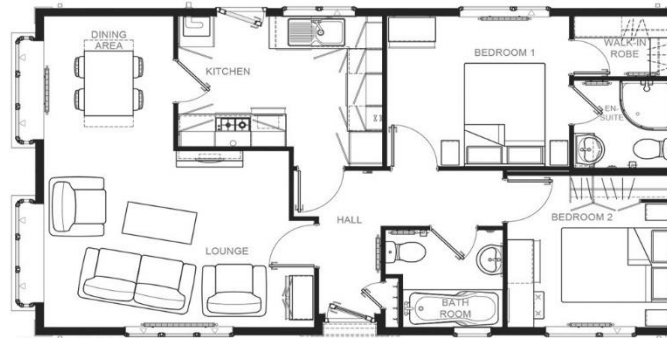
Site fees (at time of listing): £2,700 per year

Residential license

Stock images have been used.

Key Features

- Brand new home
- Coming soon
- Exceptionally High Specification
- Fully Furnished
- Modern design
- Over 45s
- Part Exchange Available
- Pet-Friendly
- Residential Development
- Two Bedrooms



Regency 36x20 2DB



House to sell?

Hassle-free Property Part-Exchange is available from Quickmove Properties, with no estate agent fees, no solicitor's fees and no market uncertainty.

CONTACT US

01793 840917

advice@quickmoveproperties.co.uk

