

# Northallerton, Yorkshire, DL73



Price as listed



This brand-new, modern-furnished Omar Vision (40'x20') luxury park home is perfect for those looking for a detached, easy-to-maintain, bungalow-style property. The home has a modern and spacious kitchen, dining area, and separate living room with electric fireplace. There are two double bedrooms, an en suite and bathroom.

The development is set in a stunning rural location on the edge of the Yorkshire Dales, with many countryside walkways directly from the park. Just 9 miles from the picturesque market town of Northallerton, where you can find boutique shops as well as high street shops and the closest medical centre. Richmond and Thirsk are within 13 miles of the park as alternate town centre destinations.

Age restriction: Over 45s

Pet friendly: Yes

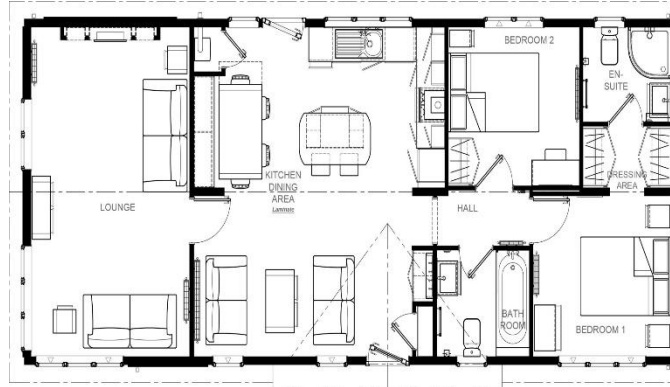
Site fees: £200 per month

Residential license

Stock images have been used.

### Key Features

- Brand new home
- Exceptionally High Specification
- Fully Furnished
- Parking for two cars
- Part Exchange Available
- Residential Development
- Rural Location
- Over 45s



### House to sell?

Hassle-free Property Part-Exchange is available from Quickmove Properties, with no estate agent fees, no solicitor's fees and no market uncertainty.

### CONTACT US

01793 840917

[advice@quickmoveproperties.co.uk](mailto:advice@quickmoveproperties.co.uk)

