

# Welshpool, Powys, SY21



£154,950



This pre-owned, modern Stately Albion Goodwood (40'x20') luxury park home is perfect for those looking for a detached, easy-to-maintain, bungalow-style property. The home has a modern kitchen, comfortable living room, two double bedrooms, the master has an en suite and a walk-in wardrobe, and a family bathroom. The landscaped exterior boasts a large, easy-to-maintain garden and driveway for 2 cars.

The town of Welshpool is just 3 miles from the park, and Shrewsbury and Wrexham are just a short drive away. The banks of the River Severn are a quarter of a mile from the park with idyllic walks in the surrounding countryside.

Age restriction: Over 50s

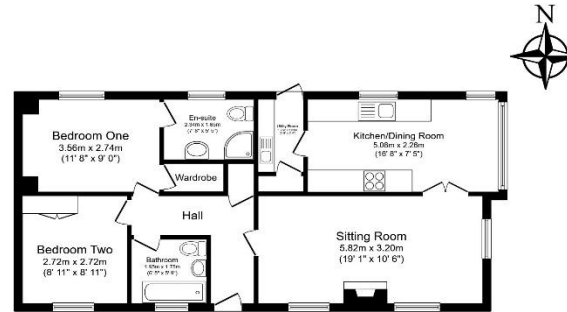
Pet friendly: Yes

Site fees: £214.80 per month

Residential license

## Key Features

- Countryside Views
- Garden space
- Over 50s
- Part Exchange Available
- Pet-Friendly
- Pre-owned park home
- Private
- Gated Development
- Residential Development
- Two Bedrooms



Total floor area 67.3 sq.m. (725 sq.ft.) approx

This floor plan is for illustrative purposes only. It is not drawn to scale. Any measurements, floor areas (including any total floor area), openings and orientation are approximate. No details are guaranteed, they cannot be relied upon for any purpose and they do not form part of any agreement. No liability is taken for any error, omission or misstatement. A party must rely upon its own inspection(s). Powered by [www.briaragent.com](http://www.briaragent.com)



### House to sell?

Hassle-free Property Part-Exchange is available from Quickmove Properties, with no estate agent fees, no solicitor's fees and no market uncertainty.

## CONTACT US

01793 840917

[advice@quickmoveproperties.co.uk](mailto:advice@quickmoveproperties.co.uk)

