

Norwich, Norfolk, NR10



Price as listed



This brand-new, modern-furnished Omar Kingfisher (40'x20') luxury lodge is perfect for those looking for a detached, easy-to-maintain, bungalow-style property. The lodge features a spacious kitchen and dining area, comfortable living space, two bedrooms, an en suite and a bathroom. The lodge also had a rooftop terrace.

The park is nestled in the countryside to the north of Norwich, with unspoilt landscapes and access to various walking routes. The coast is a short drive away, and the nearby city of Norwich is just 30 minutes by car. The Norfolk Broads are a short drive away and offer incredible waterways and countryside.

Age restriction: None

Pet friendly: Yes

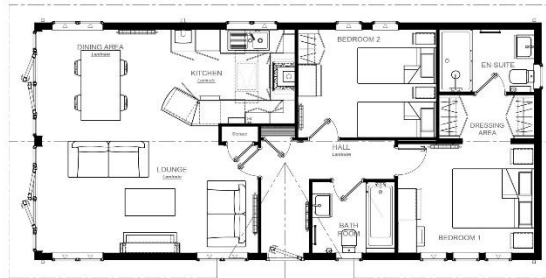
Site fees (at time of listing): £6,124.92 per year

12-month leisure license

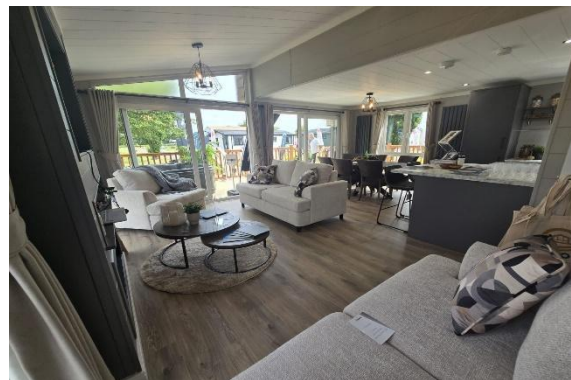
Stock images have been used.

Key Features

- 12 Month Leisure Licence
- Brand new lodges
- Exceptionally High Specification
- Fully Furnished
- House buying service
- Modern design
- No age restriction
- Private Fishing Lake
- Rural Location
- Short drive to the coast



Kingfisher 40' x 20' 2DB



CONTACT US

01793 840917

advice@quickmoveproperties.co.uk

