

Scunthorpe, Lincolnshire, DN16

Quickmove
PROPERTIES



£119,950

 x 2

 x 2

This brand new, modern-furnished Omar Newmarket (36'x20') park home is perfect for those looking for a detached, easy to maintain, bungalow-style retirement property. The home features a modern fitted kitchen with integrated appliances, the home also has two double bedroom, two bathrooms and a comfortable living area.

The development is well located with a bus stop outside the park. The nearest train station is less than 2 miles away, offering transport links to nearby cities. The Ashby Ville Nature Reserve is 2 miles from the park, offering walking trails and wildlife viewing opportunities.

Age restriction: Over 45s

Pet friendly: Yes

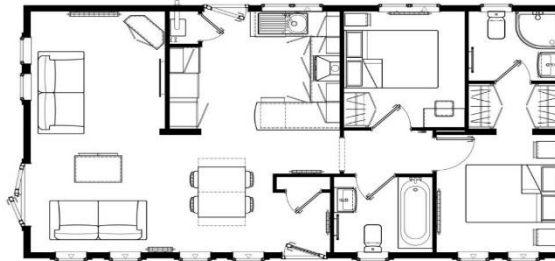
Site fees (at time of listing): £159 per month

Residential license

Stock images have been used, the home on site may vary.

Key Features

- Brand new home
- Bus Stop Nearby
- Community Living
- Driveway
- Fully Furnished
- Morrisons close by
- Over 45's
- Part Exchange Available
- Pet-friendly
- Residential Development



Newmarket 36'x20' 2DB



House to sell?

Hassle-free Property Part-Exchange is available from Quickmove Properties, with no estate agent fees, no solicitor's fees and no market uncertainty.

CONTACT US

01793 840917

advice@quickmoveproperties.co.uk

