

# Stains-Upon-Thames, Surrey, TW18



Price as listed





This brand new, modern-furnished Wessex Canford luxury park home is perfect for those looking for a detached, easy to maintain, bungalow-style retirement property. The landscaped exterior boasts a large dorma with feature lighting, garden area and parking space. The interior design is warm and inviting with comfortable sofas, feature pendant lighting and a tiled feature fireplace in the living area. The kitchen with ample storage and fully integrated appliances and a utility space. The master bedroom has a walk in wardrobe and an en suite with free standing, modern furniture.

The development is ideally located to offer the best of the stunning surroundings of the River Thames, while still being within easy distance of London and Heathrow Airport. Staines station nearby offers regular routes to London Waterloo and the rest of the country. Thorpe Park is also located nearby for thrill seekers to enjoy, and Ascot racecourse is just 25 minutes away.

Age restriction: Over 45s

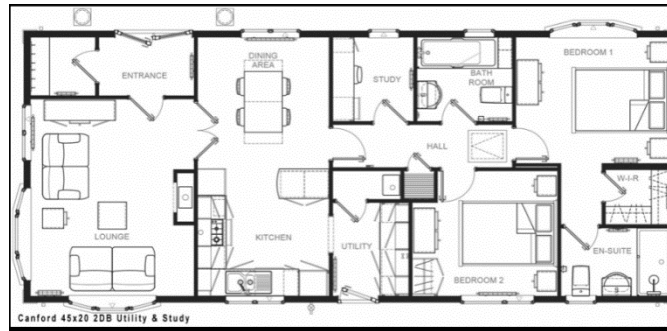
Pet friendly: Yes

Site fees (at time of listing): £3,500 per year

Residential license

## Key Features

- Brand new home
- Decked Patio Area
- Fully Furnished
- Garden space
- Part Exchange Available
- Pet-Friendly
- Residential Park
- Riverside Development
- Stunning Location



## House to sell?

Hassle-free Property Part-Exchange is available from Quickmove Properties, with no estate agent fees, no solicitor's fees and no market uncertainty.

## CONTACT US

01793 840917

advice@quickmoveproperties.co.uk

**Quickmove**  
PROPERTIES

