

Camborne, Cornwall, TR14

Quickmove
PROPERTIES



£170,000

 x 2

 x 2

This pre-owned Wessex (40'x20') park home is perfect for those looking for a detached, easy-to-maintain, bungalow-style property. The home has a modern kitchen, comfortable living room and dining area, two bedrooms, an en suite and a second shower room. The home has a large garden area with patio and lawn areas.

The park is situated on the northern outskirts of Camborne, in a quiet setting, approximately 1 mile from the town centre. A large Tesco supermarket is a similar distance. Access to the A30 is less than 2 miles, whilst the picturesque north Cornish coast at Portreath is just over 3 miles away, with a popular beach and scenic clifftop walks. There are three golf courses within a few miles of the park.

Age restriction: Over 55s

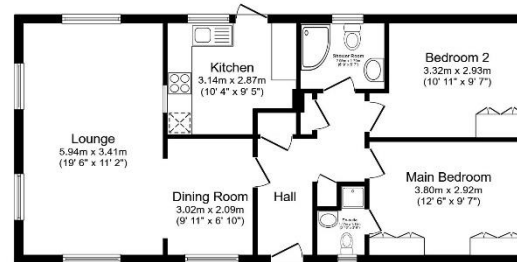
Pet friendly: Yes

Site fees: £221.12 per month

Residential license

Key Features

- Garden Shed
- Garden space
- Over 55's
- Pet-Friendly
- Pre-owned park home
- Residential Development
- Two bedrooms
- Well maintained home
- Community living
- Part exchange available



Total floor area 72.9 m² (784 sq.ft.) approx

This floor plan is for illustrative purposes only. It is not drawn to scale. Any measurements, floor areas (including any total floor area), openings and orientation are approximate. No details are guaranteed, they cannot be relied upon for any purpose and they do not form part of any agreement. No liability is taken for any error, omission or misstatement. A party must rely upon its own inspection. Powered by www.localagent.com



House to sell?

Hassle-free Property Part-Exchange is available from Quickmove Properties, with no estate agent fees, no solicitor's fees and no market uncertainty.

CONTACT US

01793 840917

advice@quickmoveproperties.co.uk

Quickmove
PROPERTIES

