

Northwich, Cheshire, CW8

Quickmove
PROPERTIES



£170,000

 x 2

 x 2

This pre-owned, well-maintained (40'x20') luxury park home is perfect for those looking for a detached, easy to maintain, bungalow-style property. The home features a modern kitchen with an island, a comfortable living and dining area, two double bedrooms, an en suite and a bathroom. There is also a private garden and two parking spaces.

The park is situated in beautiful natural surroundings which is teeming with wildlife. The development is small, consisting of just 25 homes and is located less than a mile from Delamere Forest, where you can enjoy miles of walking routes through the country's largest woodland. There is a train station less than a mile away and nearby Kelsall has amenities including a medical centre and a Co-Op.

Age restriction: Over 50s

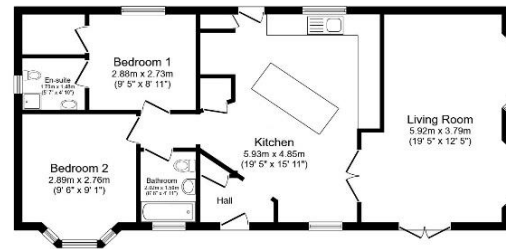
Pet friendly: Yes

Site fees (at time of listing): £215 per month

Residential license

Key Features

- Community Living
- Elevated plot
- Garden space
- Over 50s
- Part Exchange Available
- Two parking spaces
- Pre-owned park home
- Residential Development
- Two Double Bedrooms
- Well maintained home



Total floor area 78.5 m² (845 sq.ft.) approx

This floor plan is for illustrative purposes only. It is not drawn to scale. Any measurements, floor areas (including any total floor area), openings and orientation are approximate. No details are guaranteed, they cannot be relied upon for any purpose and they do not form part of any agreement. No liability is taken for any error, omission or misstatement. A party must rely upon its own inspection(s). Powered by www.foxtagent.com



House to sell?

Hassle-free Property Part-Exchange is available from Quickmove Properties, with no estate agent fees, no solicitor's fees and no market uncertainty.

CONTACT US

01793 840917

advice@quickmoveproperties.co.uk

