

# Kings Langley, Hertfordshire, WD4



Price as listed





This pre-owned, Stately Richmond park home (42'x12') is perfect for those looking for a detached, easy to maintain, bungalow style retirement property. The home has a good-sized kitchen, living room, one double bedroom and a bathroom. The exterior has a private garden with countryside views.

This park is located in open countryside and under a mile from the centre of the historic village of Kings Langley and just 5 minutes from the M25 and 10 minutes from the M1 motorways and offers easy access to Luton Airport. The village features plenty of real ale pubs and an assortment of cafés and tearooms. The larger towns of Hemel Hempstead and Watford, with their high street stores, cinemas, and health and leisure facilities are a short drive away.

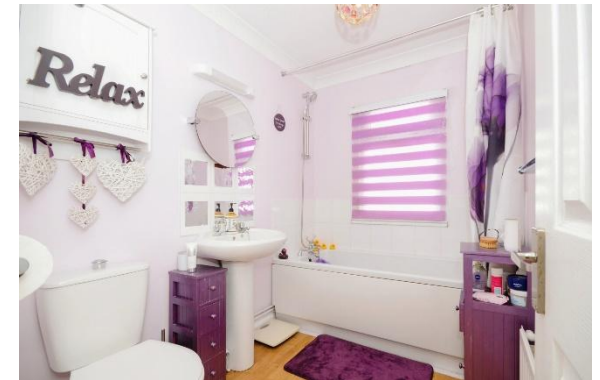
Age restriction: Over 50s  
 Site fees: £203 per month  
 Residential license

### Key Features

- Community Living
- Corner Plot
- Countryside location
- Fully Fitted Kitchen
- Garden space
- Over 50's
- One Double Bedroom
- Part Exchange Available
- Residential Development
- Shops and amenities nearby



Total floor area 51.6 m<sup>2</sup> (555 sq.ft.) approx  
This floor plan is for illustrative purposes only. It is not drawn to scale. Any measurements, floor areas, excluding any total floor area, openings and orientation are approximate. No details are guaranteed. They cannot be relied upon for any purpose and they do not form part of any agreement. No liability is taken for any error, omission or misstatement. It is your responsibility to verify the information. Powered by www.floorplan.com



**House to sell?**  
 Hassle-free Property Part-Exchange is available from Quickmove Properties, with no estate agent fees, no solicitor's fees and no market uncertainty.

### CONTACT US

01793 840917

advice@quickmoveproperties.co.uk

