

Southampton, Hampshire, SO31

Quickmove PROPERTIES



£315,000



This brand new, modern-furnished Omar Image (40'x20') luxury park home is perfect for those looking for a detached, easy to maintain, bungalow style retirement property. The home has a modern, spacious kitchen with integrated appliances, a comfortable living and dining room, two double bedrooms and two bathrooms.

The park is situated near to the River Hamble, in the village of Warsash. A supermarket and post office are within walking distance, together with a library, health centre and opticians. The historic City of Southampton has an excellent shopping centre together with cinema and theatre, etc. There are many local places of interest to visit, including the New Forest, Isle of Wight, Winchester and Salisbury.

Age restriction: Over 50s

Pet friendly: Yes

Site fees (at time of listing): £280 per month

Residential license

Stock images have been used, the home on site may vary

Key Features

- Brand new home
- Coming soon
- Community Living
- Fully Furnished
- Over 50's
- Part Exchange Available
- Residential Park
- Shops and amenities nearby
- Two Double Bedrooms

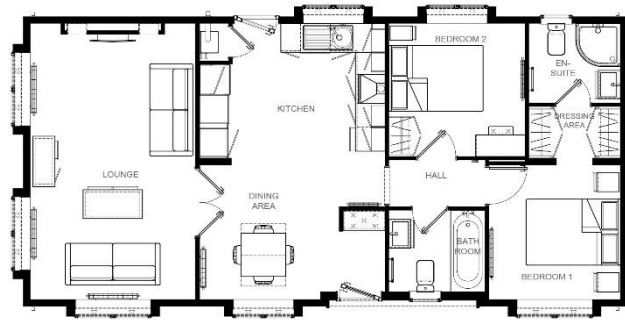


Image 40' x 20' 2DB



House to sell?

Hassle-free Property Part-Exchange is available from Quickmove Properties, with no estate agent fees, no solicitor's fees and no market uncertainty.

CONTACT US

01793 840917

advice@quickmoveproperties.co.uk

