

Croydon, Surrey, CR6

Quickmove
PROPERTIES



£289,995

 x 2

 x 2

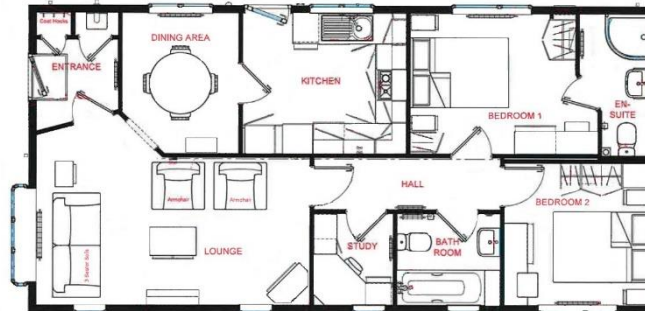
This brand new, modern-furnished Omar Regency (40'x20') luxury park home is perfect for those looking for a detached, easy to maintain, bungalow-style property. The home features a kitchen with integrated appliances, a comfortable living room, two double bedrooms, a study, an en suite and a bathroom.

This is a well-established residential park is located close to Warlingham. Newspapers, milk and bread are delivered to the park and a mobile library visits on a regular basis. All new homes sited are fully furnished and have tiled roofs, mains gas central heating and double glazing. This development is situated between woodland and open parkland, yet only 15 miles from central London. There is a regular bus service to Croydon and Caterham and access to the M25 is only 6 miles away.

Age restriction: Over 50s
 Pet friendly: Yes
 Site fees: £274 per month
 Residential license

Key Features

- Brand new home
- Community Living
- Established Park
- Fully Furnished
- Integrated Appliances
- Over 50s
- Part Exchange Available
- Residential Development
- Two Double Bedrooms
- Village location



House to sell?
 Hassle-free Property Part-Exchange is available from Quickmove Properties, with no estate agent fees, no solicitor's fees and no market uncertainty.

CONTACT US

01793 840917

advice@quickmoveproperties.co.uk

