

# Chesterfield, Derbyshire, S42



£99,995

 x 2

 x 1

This refurbished Tingdene Villa park home is perfect for those looking for a detached, easy to maintain, bungalow style property. The well maintained home features a kitchen, living space, two bedrooms and bathroom.

The park is located in the suburb of New Tupton, on the outskirts of The Peak District, Matlock Baths and other popular tourist resorts. New Tupton has an Iceland supermarket, convenience stores and Medical centre. The largest town is Chesterfield just 4 miles away, with all big town facilities and amenities.

Age restriction: Over 45s

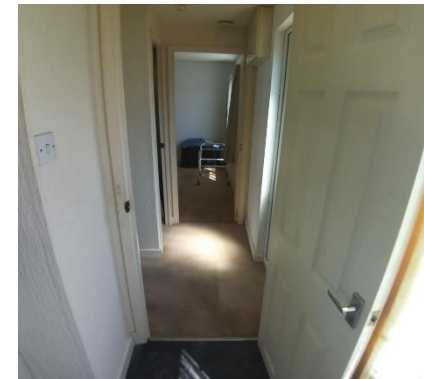
Pet friendly: Yes

Site fees (at time of listing): £222 pcm

Residential license

### Key Features

- Close To Nearby Amenities
- Fully Furnished
- Fully refurbished home
- Garden space
- Luxury Park Home
- Off Street Parking
- Over 45s
- Part Exchange Available
- Pets welcome
- Residential Park



### House to sell?

Hassle-free Property Part-Exchange is available from Quickmove Properties, with no estate agent fees, no solicitor's fees and no market uncertainty.

### CONTACT US

01793 840917

[advice@quickmoveproperties.co.uk](mailto:advice@quickmoveproperties.co.uk)

**Quickmove**  
PROPERTIES

