

# Poole, Dorset, BH16



£227,500



This pre-owned, modern park bungalow (40'x20') is perfect for those looking for a detached, easy to maintain, bungalow style retirement property. The home was built in 2019 and is in excellent condition, featuring a modern kitchen and lounge/diner area. It has two double bedrooms, and the master bedroom has an en-suite shower room. The home has a garden area with a shed and a private driveway.

This development is set within a beautiful, landscaped, forest setting with elevated views of the surrounding countryside. There is a coffee lounge on site and residents have fishing rights to the lakes on the park and access to many walking routes in the nearby New Forest Park.

Age restriction: Over 45's

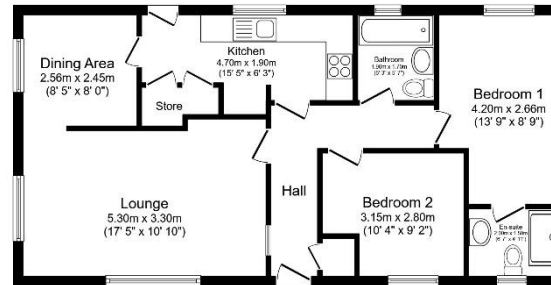
Pet friendly: Yes

Site fees: £3,156 per year

Residential license

## Key Features

- Integrated appliances
- Over 45's
- Part exchange available
- Pets welcome
- Pre-loved park home
- Coffee lounge
- Private, gated development
- Residential development
- Two bedrooms
- Well maintained home



Total floor area 69.0 sq.m. (743 sq.ft.) approx

This floor plan is for illustrative purposes only. It is not drawn to scale. Any measurements, floor areas (including any total floor area), openings and orientation are approximate. No details are guaranteed, they cannot be relied upon for any purpose and they do not form part of any agreement. No liability is taken for any error, omission or misstatement. A party must rely upon its own inspection(s). Powered by [www.floorplan.com](http://www.floorplan.com)



## House to sell?

Contact Quickmove for a free, no-obligation Part-Exchange valuation on this home. Enjoy a hassle-free move, with no estate agents' fees or solicitors to pay. You even get to keep the keys to your existing property for 2 weeks after completion, so you can move out at your leisure.

## CONTACT US

01793 840917

[advice@quickmoveproperties.co.uk](mailto:advice@quickmoveproperties.co.uk)

**Quickmove**  
PROPERTIES



The Property  
Ombudsman