

St Austell, Cornwall, PL26



£175,000



This pre-owned, Homeseeker Sophia (42'x20') park home is perfect for those looking for a detached, easy-to-maintain, bungalow-style property. The home has a modern kitchen with integrated appliances, dining area, living room, two double bedrooms, an en suite and a bathroom. The exterior has a private garden, decking and driveway.

This is a lovely residential development that enjoys an elevated rural setting between farmland and with stunning countryside views. The development is set in 12 acres of land in the centre of Cornwall a few miles from the A30. Views of the North Cornish coast some ten miles away can be seen from the park and the south coast is about eight miles away.

Age restriction: Over 50s

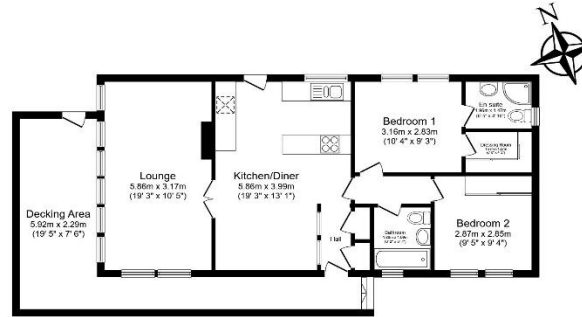
Pet friendly: Yes

Site fees: £225 per month (includes water and sewerage)

Residential license

Key Features

- Decking
- Garden space
- Modern design
- Over 50s
- Part Exchange Available
- Pet-Friendly
- Residential Park Home
- Spectacular Views
- Two Double Bedrooms
- Well maintained home



Total floor area 73.6 m² (794 sq.ft.) approx

This floor plan is for illustrative purposes only. It is not drawn to scale. Any measurements, floor areas (including any total floor area), openings and orientation are approximate. No details are guaranteed, they cannot be relied upon for any purpose and they do not form part of any agreement. No liability is taken for any error, omission or misstatement. A party must rely upon its own inspection(s). Powered by www.housespart.com



House to sell?

Hassle-free Property Part-Exchange is available from Quickmove Properties, with no estate agent fees, no solicitor's fees and no market uncertainty.

CONTACT US

01793 840917

advice@quickmoveproperties.co.uk

Quickmove
PROPERTIES

