

Portbury, Bristol, BS20



£165,000



This pre-owned (40'x20') park home is perfect for those looking for a detached, easy-to-maintain, bungalow-style property. The home has a spacious kitchen, utility area, dining room, living room, two bedrooms, an en suite and a bathroom. The exterior features a landscaped garden and driveway.

The park consists of 48 homes set in beautiful surroundings with established gardens, roads, paths, and a local bridleway. The development is in the hamlet of Sheepway in North Somerset but has easy access to the local towns by the local bus services. The M5 and A369 are close to the park to explore the surrounding area and provide easy access to cross over into South Wales. The coastal resort of Weston-Super-Mare is only a 30-minute drive away.

Age restriction: Over 50s

Pet friendly: No

Site fees (at time of listing): £243 per month

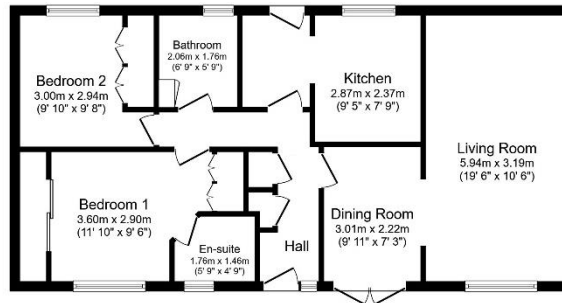
Residential license

House to sell?

Hassle-free Property Part-Exchange is available from Quickmove Properties, with no estate agent fees, no solicitor's fees and no market uncertainty.

Key Features

- Driveway
- Established Park
- Garden space
- Over 50s
- Part Exchange Available
- Pre-owned park home
- Property is vacant
- Residential Development
- Two Bedrooms
- Well maintained home



Total floor area 72.7 sq.m. (783 sq.ft.) approx
This floor plan is for illustrative purposes only. It is not drawn to scale. Any measurements, floor areas (including any total floor area), squareage and orientation are approximate. No details are guaranteed, they cannot be relied upon for any purpose and they do not form part of any agreement. No liability is taken for any error, omission or misstatement. A party must rely upon its own inspections. Powered by www.localagent.com



CONTACT US

01793 840917

advice@quickmoveproperties.co.uk

