

# Oakham, Rutland, LE15



Price as listed





This pre-owned park home (40'x20') is perfect for those looking for a detached, easy to maintain, bungalow style retirement property. The home has a spacious kitchen, dining area, living room with an electric fireplace, two double bedrooms, an en suite and a bathroom. The home has an easy to maintain private garden, and a driveway.

This residential development is set within landscaped grounds. It is a stunning, pet friendly, development surrounded by glorious countryside, with country walks leading directly from the front door. The market town of Oakham is less than 10 minutes away offering a wide selection of shops and restaurants.

Age restriction: Over 50s

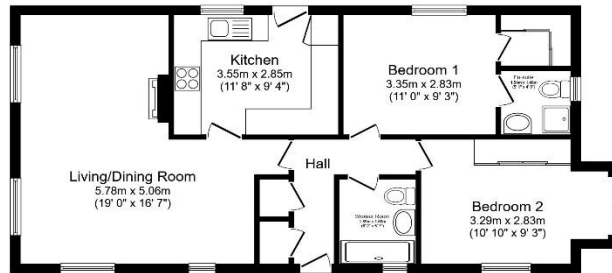
Pet friendly: Yes

Site fees: £210 per month

Residential license

### Key Features

- Community Living
- Countryside Views
- Driveway
- Established Park
- Garden space
- Over 50s
- Pet-Friendly
- Pre-owned park home
- Residential Development
- Two Bedrooms



Total floor area 70.5 m<sup>2</sup> (759 sq.ft.) approx

This floor plan is for illustrative purposes only. It is not drawn to scale. Any measurements, floor areas (including any total floor area), openings and orientation are approximate. No details are guaranteed, they cannot be relied upon for any purpose and they do not form part of any agreement. No liability is taken for any error, omission or misstatement. A party must rely upon its own inspection(s). Powered by www.b2iasagent.com



### House to sell?

Hassle-free Property Part-Exchange is available from Quickmove Properties, with no estate agent fees, no solicitor's fees and no market uncertainty.

### CONTACT US

01793 840917

advice@quickmoveproperties.co.uk

