

Cheltenham, Gloucestershire, GL51

Quickmove  
PROPERTIES



£195,000

 x 2

 x 2

This brand-new, modern-furnished Omar Newmarket (37'x20') luxury park home is perfect for those looking for a detached, easy-to-maintain, bungalow-style property. The home has a spacious kitchen with integrated appliances, dining area and comfortable living room. There are two double bedrooms, an en suite and a bathroom.

Located on the edge of Cheltenham, this development is well located with amenities nearby. The centre of Cheltenham is just 3 miles away, with high street shopping and restaurants. Cheltenham has great transport links to the Cotswolds and the wider area of the South West.

Age restriction: Over 45s

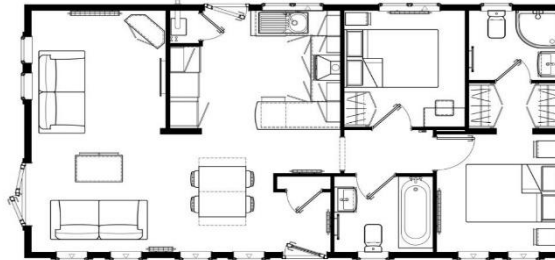
Pet Friendly: Yes

Site fees (at time of listing): £200 per month

Residential license

### Key Features

- Brand new home
- Community Living
- Modern design
- Over 45s
- Part Exchange Available
- Pet-Friendly
- Residential Development
- Two Bedrooms



Newmarket 36'x20' 2BR



### House to sell?

Hassle-free Property Part-Exchange is available from Quickmove Properties, with no estate agent fees, no solicitor's fees and no market uncertainty.

### CONTACT US

01793 840917

advice@quickmoveproperties.co.uk

