

Vale Of York, Yorkshire, YO8



Price as listed



This brand new, modern-furnished Prestige Sonnet (40'x20') luxury park home is perfect for those looking for a detached, easy to maintain, bungalow-style property. This home features a kitchen with integrated appliance, living room with comfortable furniture, two bedrooms and two bedrooms. Each home comes with an 8'x10' shed.

The 45-acre park is well located in Yorkshire. Right next door to Selby Golf Course, only 4 miles from the historic market town of Selby, which in a recent Halifax survey was voted "top spot" in Yorkshire when it comes to quality of life. A safe and secure gated community with a village green, nature area and on-site fishing.

Age restriction: Over 50's

Pet friendly: Yes

Site fees: £252.73 per month

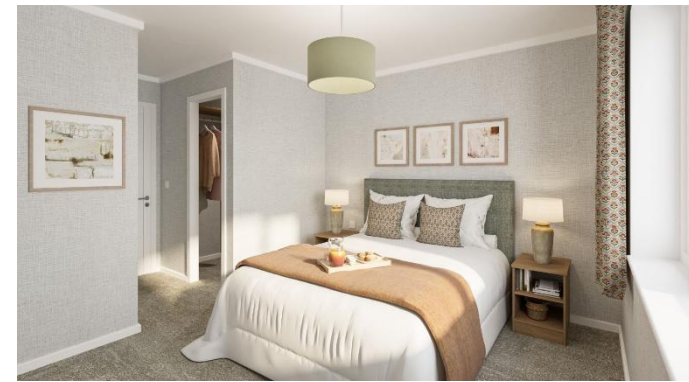
Stock images have been used, the home on site may vary

House to sell?

Hassle-free Property Part-Exchange is available from Quickmove Properties, with no estate agent fees, no solicitor's fees and no market uncertainty.

Key Features

- Brand new home
- CCTV Security System
- Over 50s
- Part Exchange Available
- Pet-Friendly
- Popular Residential Park
- Private, Gated Development
- Residential Park Home
- Shops and amenities nearby



CONTACT US

01793 840917

advice@quickmoveproperties.co.uk

Quickmove
PROPERTIES

