

# Silloth, Cumbria, CA7



£185,000



This is a very well presented two double bedroom park home bungalow (40'x20') located on this sought after residential park for the over 50's. The home is sold fully furnished and boasts an open plan kitchen, living and dining area, two double bedrooms, an en suite and a bathroom. The home is on a generous plot, it has an outside electric stair lift, a driveway and detached garage to the side. The garden is fully stocked with fruit trees. The home can be left fully furnished.

The park is set in tranquil grounds only 100m from the sea in the coastal town of Silloth-on-Solway, just a short drive from the Lake District, with its picturesque lakes, idyllic villages, and high moorlands. In Silloth you can find all local amenities and 25 miles away is the larger city of Carlisle.

Age restriction: Over 50s

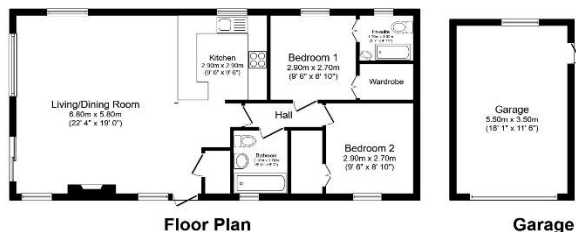
Pet friendly: Yes

Site fees (at time of listing): £204.11 per month

Residential license

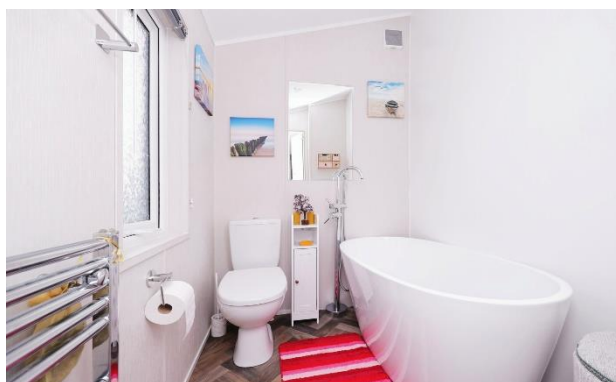
## Key Features

- Access to leisure facilities
- Garage and Driveway
- Garden space
- Fully furnished
- Over 50s
- Part Exchange Available
- Pet-Friendly
- Pre-owned park home
- Residential Development
- Two Double Bedrooms



Total floor area 93.1 m<sup>2</sup> (1,002 sq.ft.) approx

This floor plan is for illustrative purposes only. It is not drawn to scale. Any measurements, floor areas (including any total floor area), openings and orientation are approximate. No details are guaranteed. They cannot be relied upon for any purpose and they do not form part of any agreement. No liability is taken for any error, omission or misstatement. A party must rely upon its own inspections. Powered by www.localagent.com



## CONTACT US

01793 840917

advice@quickmoveproperties.co.uk

**Quickmove**  
PROPERTIES



The Property  
Ombudsman