

Cheltenham, Gloucestershire, GL50



£255,000



This brand new, modern-furnished Omar Image (40'x20') luxury park home is perfect for those looking for a detached, easy to maintain, bungalow-style property. The home features a spacious kitchen and dining room with integrated appliances, a comfortable living room, two double bedrooms, an en suite and a bathroom. The home also has parking for 2 cars.

Located in the heart of Cheltenham and just under a mile from Cheltenham racecourse, with amenities within walking distance. The nearby town of Gloucester is less than 10 miles away, and Cheltenham sits on the edge of the Cotswolds, an area of natural beauty with plenty of lovely villages and parks to explore.

Age restriction: Over 45s

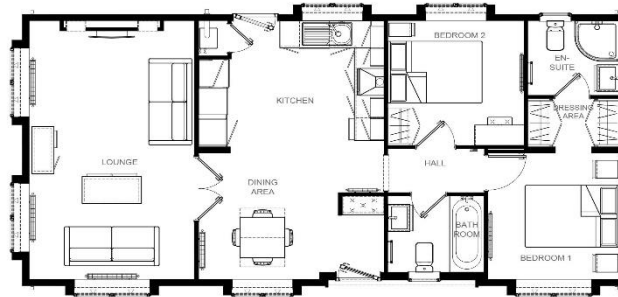
Pet friendly: Yes

Site fees: £200 per month

Residential license

### Key Features

- Brand new home
- Community Living
- Fully Furnished
- Integrated Appliances
- Over 45s
- Part Exchange Available
- Pet-Friendly
- Residential Development
- Town location
- Two Double Bedrooms



### House to sell?

Hassle-free Property Part-Exchange is available from Quickmove Properties, with no estate agent fees, no solicitor's fees and no market uncertainty.

### CONTACT US

01793 840917

advice@quickmoveproperties.co.uk

